



OWN A HOME, NOT A DEBT. —————

98 Hobsonville Road, Hobsonville, Auckland 0618

www.modernmodular.co.nz

TINY / EXPANDABLE / FOLDING / MODULAR HOUSE

0800 242 208 | sales@modernmodular.co.nz



WHO WE ARE

We are a **New Zealand-based** modular housing company specializing in the **design, production, sales, and installation** of high-quality **Modular House, Expandable Houses, and Modern Cabins**.

Whether it's a residential unit, commercial space, holiday home, construction site accommodation, or emergency housing, we offer efficient, sustainable, and fully customizable building solutions.

As an **industry leader in the local market**, we bring more than just products—we offer a **new way of living** that makes homebuilding **faster, more flexible, and future-ready**.

OUR VISION

| *Revolutionizing Housing with Smarter, Faster, and Greener Solutions.*

Our mission is to transform the residential and commercial construction industry by making buildings more efficient, adaptable, and sustainable. By continuously improving modular technology, we strive to offer smarter, more convenient living solutions that align with future trends.

"Modular Construction = The Future of Housing"

"Faster, More Affordable, and Premium-Quality"

"One-Stop Building Solution"

"New Zealand Operated"

WHY CHOOSE US?

01

Local Expertise, Built for New Zealand

With in-depth knowledge of the New Zealand housing and commercial market, our buildings are designed to meet NZ Building Code requirements, ensuring quality and compliance. Our expert team of architects, engineers, and construction professionals provides seamless end-to-end solutions.

02

Modular Construction – Faster Build, Lower Cost

Compared to traditional buildings, our modular and expandable houses can reduce construction time by 50%-70%, allowing you to move in within weeks instead of months. Our standardized design approach also helps cut costs while maintaining premium quality.

03

Eco-Friendly & Energy Efficient

We prioritize sustainability, using green building materials and energy-efficient designs that minimize carbon footprints. Our factory-prefabricated + on-site assembly model significantly reduces waste, making our homes an environmentally responsible choice.

04

Flexible & Customizable

Whether you need extra living space, a mobile office, a pop-up retail store, a holiday retreat, or temporary construction housing, we offer fully customizable modular solutions to fit your unique needs.

05

Reliable After-Sales Support

We don't just sell homes—we provide ongoing maintenance and service support, ensuring long-term value and customer satisfaction.

Homeowners

Individuals and families looking for quick and cost-effective housing solutions (rental units, holiday homes, granny flats).

Businesses

Companies in need of flexible, relocatable offices, retail spaces, or exhibition booths.

Government &

Community Projects

Emergency housing, social housing, portable classrooms, and more.

Construction Industry

Firms requiring fast-deployable staff accommodation and site offices.

Tourism & Hospitality

Resorts, farms, and campsites looking for stylish, self-contained accommodation units.

...& More

Our solutions help clients save money, reduce construction time, and access high-quality, sustainable, and flexible building options that align with modern trends.



OWN A HOME, NOT A DEBT. —



MODULAR HOUSE

MODERN STYLE FLAT ROOF DESIGN

WHAT IS MODULAR HOUSE:



A BRAND NEW LIVING STYLE

HIGH THERMAL INSULATION PERFORMANCE, WIND AND EARTHQUAKE RESISTANCE, STRUCTURAL WATERPROOFING, NOISE RESISTANCE, SUN CLEANING COATING TO PREVENT DURABILITY

Modular building concept seems progressive and highly advantageous. Modular is like stacking blocks. Sections of the building are already pre-assembled. Now it's about putting the larger blocks together. This pre-assembly method allows for even greater quality control and faster construction on-site. Everything is merely assembled rather than created. This means all the construction takes weeks rather than months.

The main components adopt a highly standardized modular design. The requirements of modularization ensure the standardization of component. Industrial scale production, while improving construction quality, costs and time saving. Also reduce waste of material and resources. There is an estimate saving of 30 to 60 percent of the overall schedule through a modular approach.



MODULAR BUILDING CONCEPT :

MODULAR BUILDING CONCEPT

The concept of modular building is advanced and highly beneficial for construction.

1.(Patented) 4 in 1 Base Steel Structure module. This integrates the galvanized steel structure base, structure flooring,Lifting points and thermal break into one unit.

2.(Patented) 5 in 1 Modular Integrated underfloor module: This integrates the exterior aluminium cladding, Fire retardant insulation foam, Lightweight galvanized steel structural frame, interior color steel sheet and thermal break into one unit.

3.(Patented) 5 in 1 Modular Integrated wall module: This integrates the exterior aluminium cladding, Fire retardant insulation foam, lightweight galvanized steel structural frame, interior carbon crystal board and thermal break into one unit.

4.(Patented) 6 in 1 Modular Integrated Roof module: This integrates the exterior aluminium roof cladding, solar panel installation system, Fire retardant insulation foam, lightweight galvanized steel structure frame, interior ceiling lining and thermal break into one unit. The installation process is like stacking blocks. Various parts of the building are pre-assembled and manufactured in the factory, similar putting together larger building blocks. Pre-assembly method allows for better quality control and faster on-site construction. Main module are designed with a high level of standardization in a modular format. Industrial-scale production is key to modularization to ensure that each component is standardized while improving construction quality, saving costs and time. It also reduces material and resource waste. By using modular installation, it is estimated that the total on-site construction time can be reduced by 30%to 60%!

MODULAR ASSEMBLY

All the module are connected with bolts and screws. Most module, such as roofs, walls, floors, windows and doors are manufactured and assembled in a factory environment. The production process is quick and efficient, then the module are delivered to the site, everything is merely assembled rather than created. This means that the entire construction process only takes a few days instead of several months.

MODULAR BUILDING CONCEPT:

MODULAR ENVIRONMENTAL PROTECTION

According to research, the modular building concept can save up to 40%of materials because every components is completed in the factory. It reduces waste, eliminates construction debris, low-carbon and environmentally friendly, optimizes energy use, reduces transportation and decreases emissions.

MODULAR QUALITY CONTROL

From star to finish, every aspect of modular components undergoes rigorous scrutiny and strict inspections to ensure they meet higher quality standards.



CHARACTERISTICS OF MODULAR CONSTRUCTION:

Exterior Material: Aluminum alloy cladding, with high UV and weather-resistant protective coating, compliant with international standards

Panoramic Curtain Wall System: Low-E double-layer tempered glass, high thermal insulation performance, fully thermally broken aluminum frame structure, compliant with international standards.

Main Structure: Galvanized Steel Structure, compliant with international standards.

Floor, Wall, and Roof Systems: Utilize insulation systems compliant with international standards.

Wind and Seismic Resistance: Galvanized steel structures will provide wind and earthquake resistance capabilities.

Insulation: Flame-retardant insulation materials with high insulation performance, compliant with international standards.

Sanitary Ware: All sanitary ware and plumbing materials are certified locally. They are installed by locally registered plumbers and gas fitters.

Electrical: All electrical work will be performed by locally registered electricians, with a local Certificate of Compliance (COC) issued.

Structural Floor: Plywood

Floor: High-quality SPC flooring

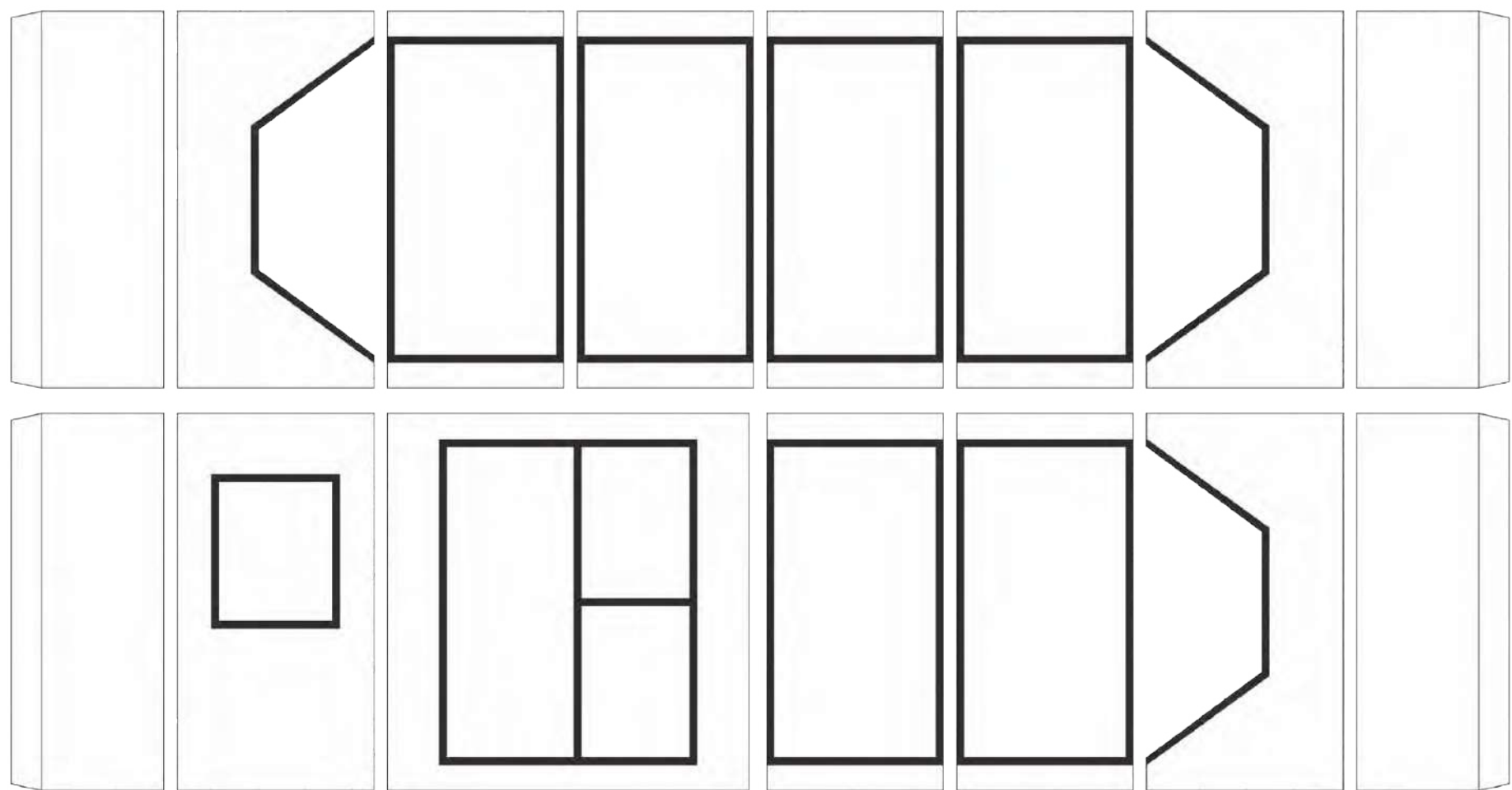
Eco-friendly Interior Decoration: Carbon crystal board

Hot Water: Electric heating

Service Life: Over 30 years

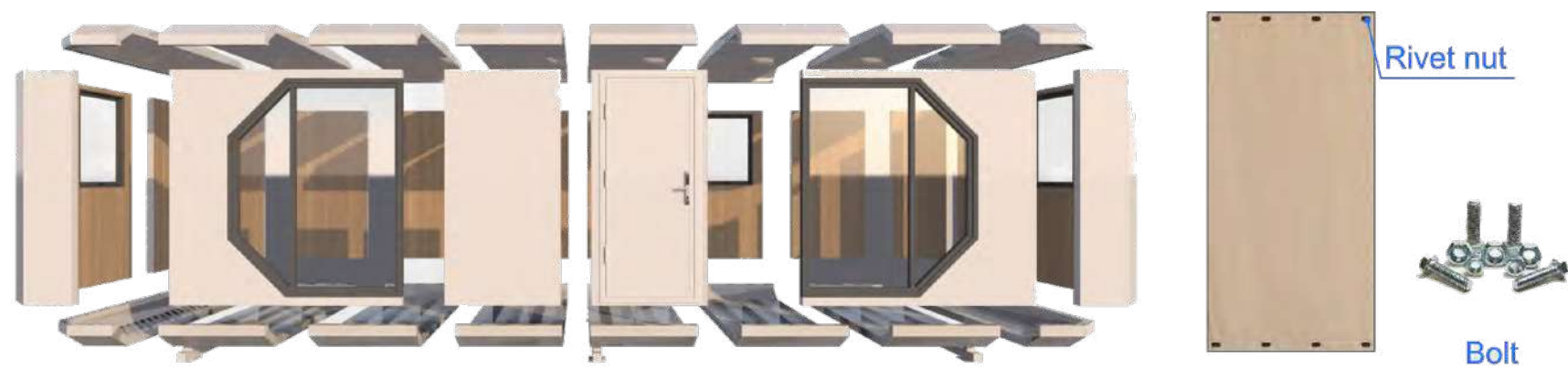
CHARACTERISTICS OF MODULAR CONSTRUCTION:

To reduce installation time and construction costs, we modularize the components for the wall, floor and roof module during the production process in the factory. All components can be quickly assembled. Each wall module can also be individually replaced with doors and windows. Every wall module has an independent number, allowing for individual replacement if any issues arise in the future.



MODULAR PECULIARITY:

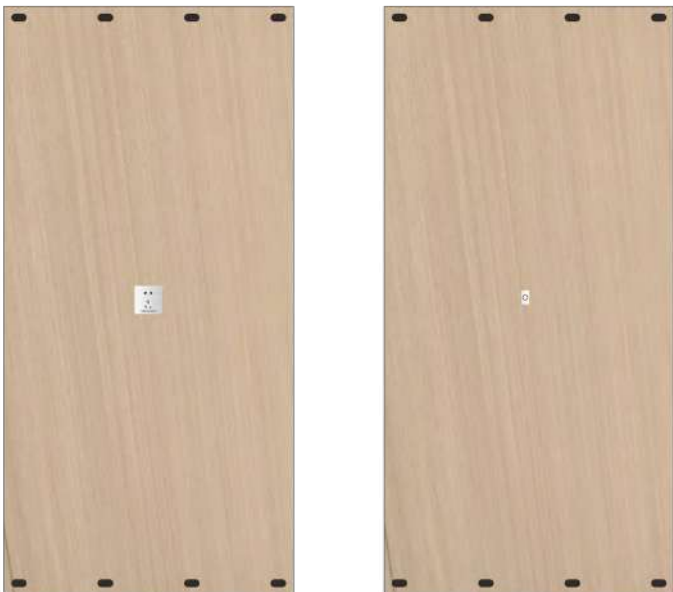
1. Modular design installation efficient and convenient,ten support feets, fixed with bolts(wind and earthquake resistance)



2. Modular combination to meet more space requirements.



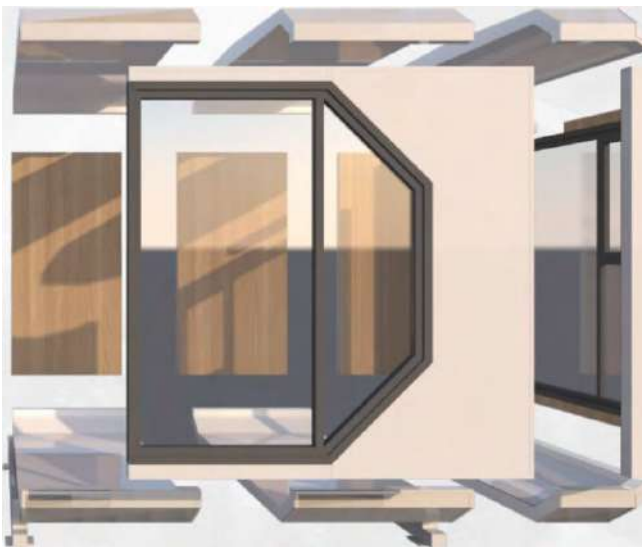
3. Modular electrical installation, pre-conduit for wiring



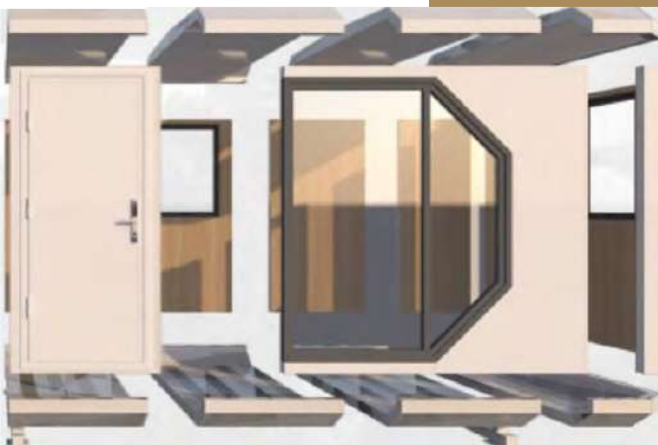
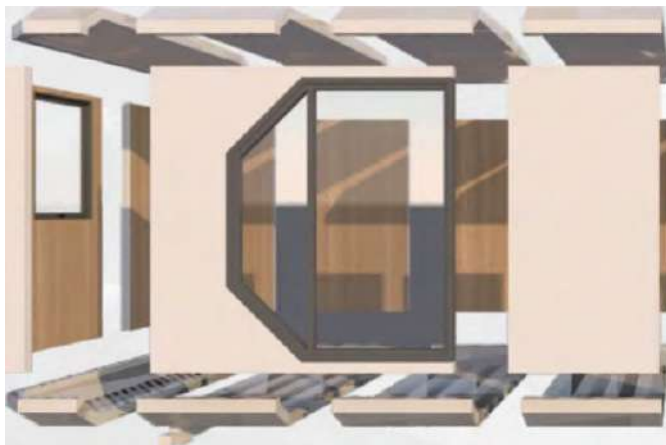
4. Modular design flexibility can be customized size.



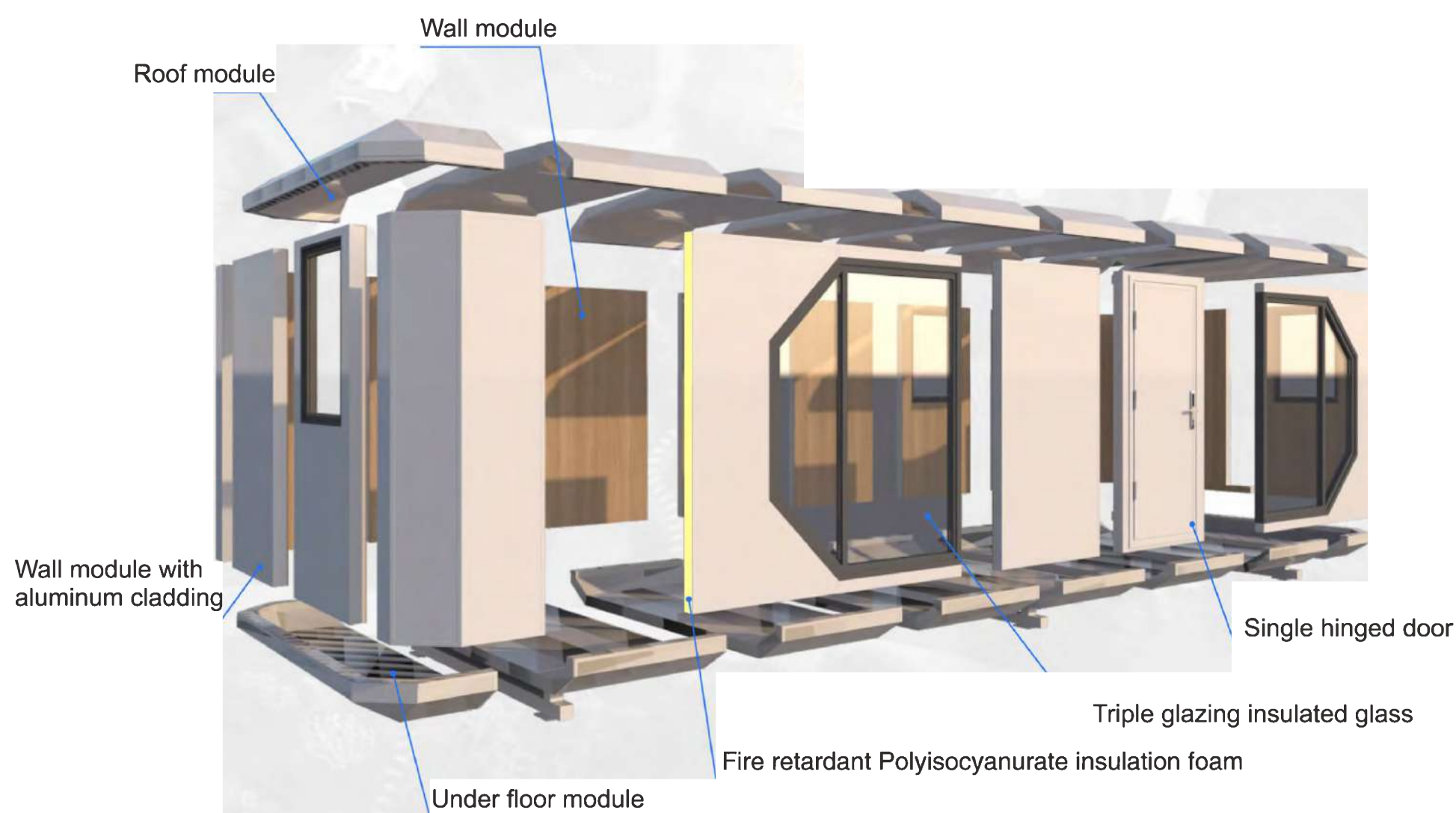
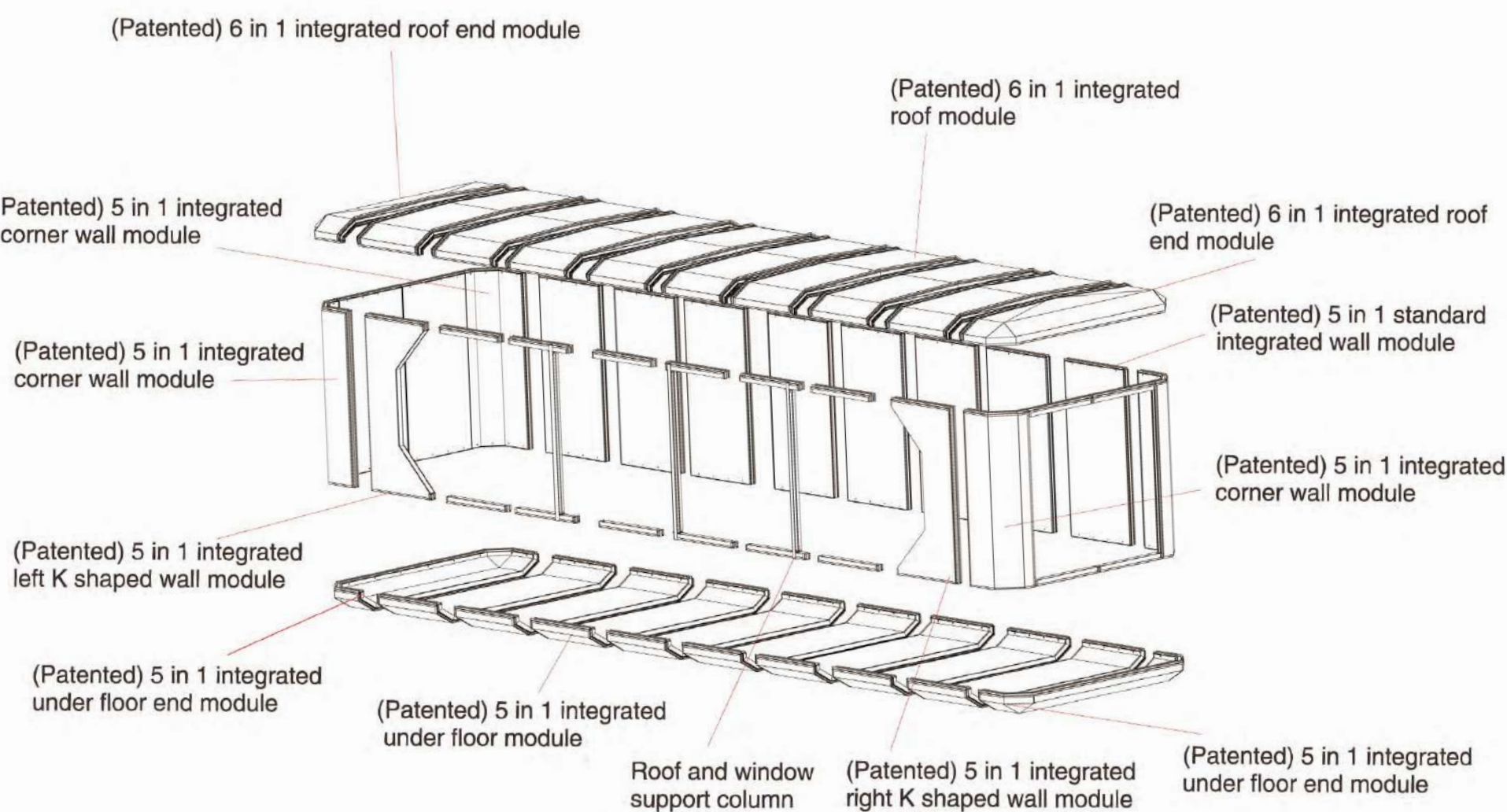
To add additional module



extended

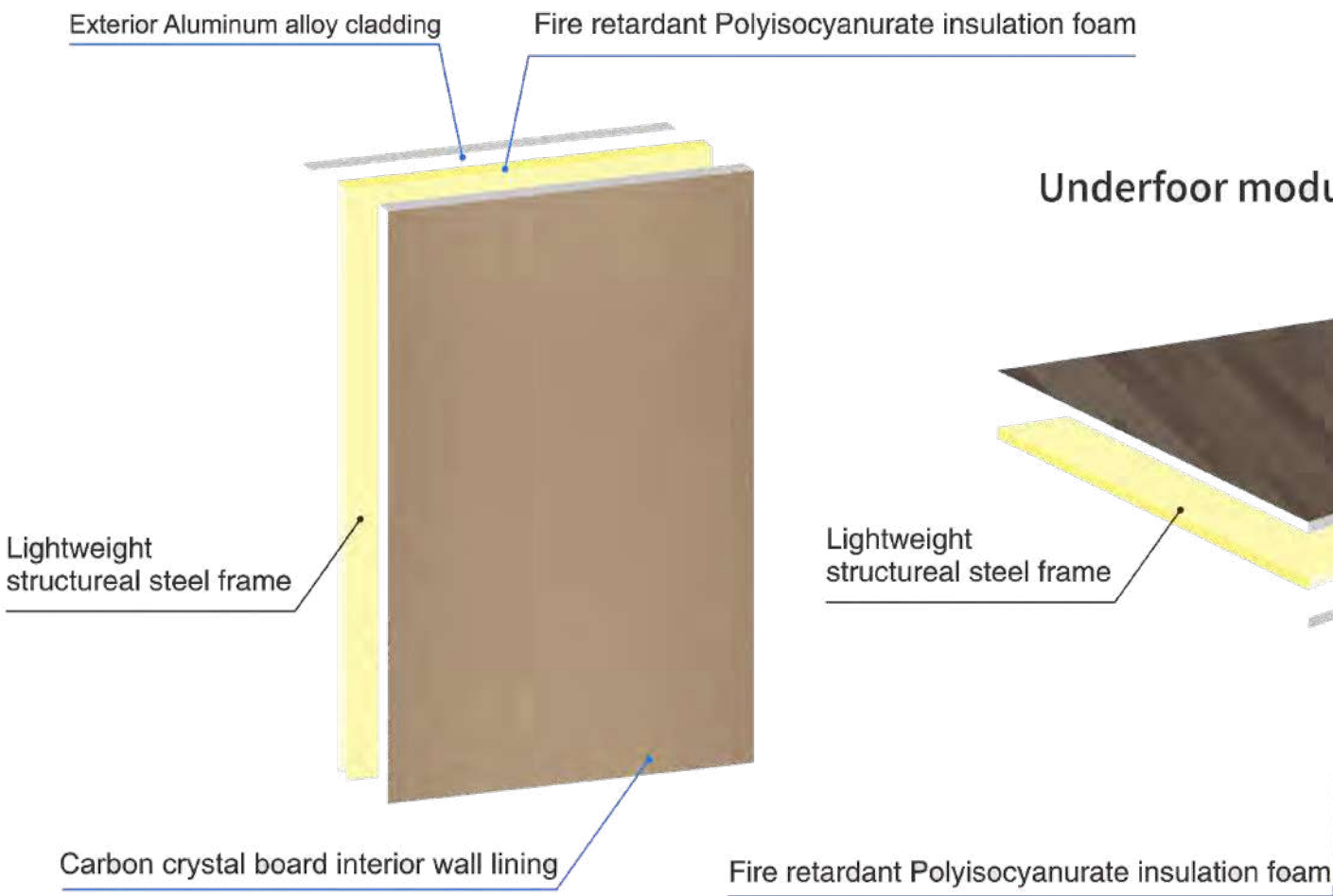


MODULAR MATERIAL ANALYSIS:

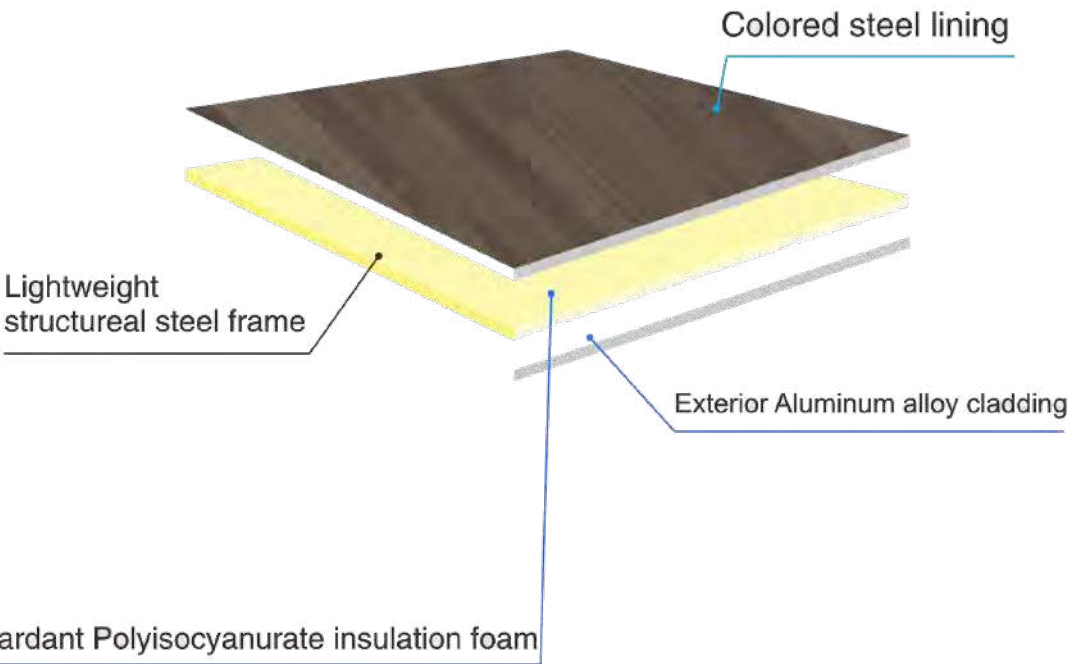


MODULAR MATERIAL ANALYSIS:

Wall module



Underfloor module



23 SQM MODERN STYLE FLAT ROOF DESIGN



MF-23

UNIT SPECIFICATIONS

1 | 1

External dimensions

Length 6.50m
Width 3.48m
Height 3.30m

Internal Dimensions

Length 6.30m
Width 3.28m
Height 2.62m

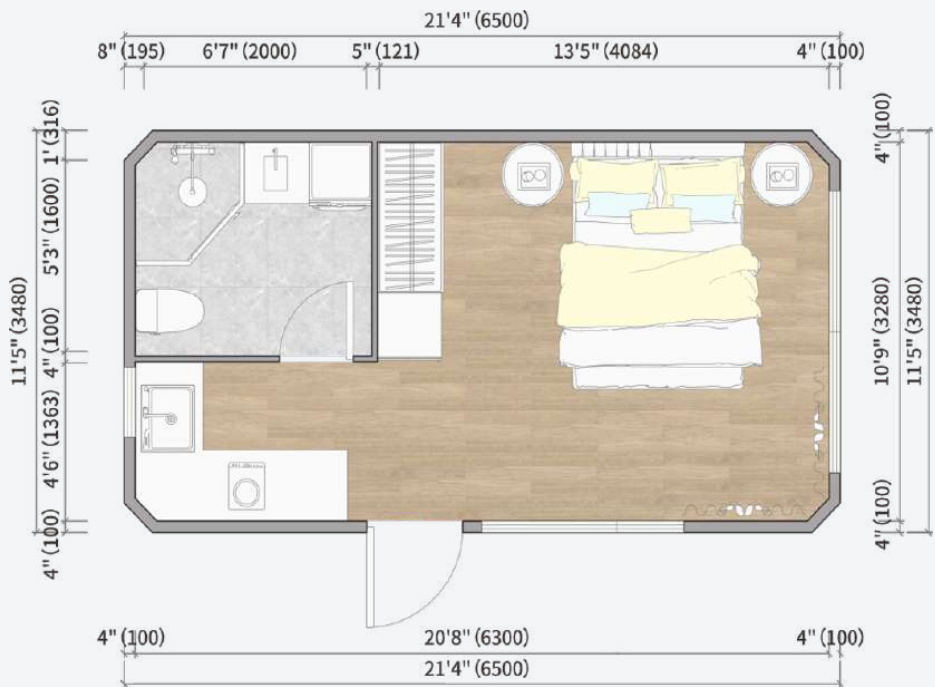
Area

TOTAL AREA: 22.60 m²

Unit Layout

Bedroom, Kitchen & Living,
Wet & Dry Toilet/Bath

THE HOUSE LAYOUT
CAN BE CUSTOMIZED
AND CHANGED TO
YOUR NEEDS.



Roof Module

- Roofing Aluminium Cladding with PVDF coating(PolyVinyliDene Fluoride).
- Lightweight structure steel frame.
- Interior ceiling Aluminium Lining.
- Thermal break around the module.
- Solar panel installation rib.
- Per-wiring ducting.
- Fire retardant Injected PIR Insulation.

Wall Module

- Exterior Aluminium Cladding.
- Lightweight Galvanized Structure steel frame.
- Fire retardant Injected PIR Insulation.
- 8mm Carbon crystal wall board.
- Thermal break around the module.
- Per-wiring ducting.

Windows And Doors

- Thermal break Aluminium joinery.
- 6 +22A +6mm toughened Low-E double glazing.
- 900wide x 2100high Heavy duty insulated entry door with digital smart lock.

Finishing Floor

- SPC flooring 5mm + 1.5mm underlay, Wear layer 0.5mm, UV Resistant, Anti-Slip, Fire retardant and Moisture Proof .

Insulated Structure Floor Module

- Exterior Aluminium Cladding with PVDF coating.
- Lightweight structure steel frame.
- Fire retardant Injected PIR Insulation.
- Interior color steel sheet.
- Aluminium Extrusion Thermal break around the module.
- Per-wiring conduit.

Structure floor Module

- Galvanized Structural Steel floor joists frame.
- Waterproof 18mm structural F11 plywood floor.

Galvanized Steel Bearers

- Galvanized steel Bearers.
- 6 support legs for Bolt down coated with Hot dip galvanized.
- Galvanized Cross Beam.
- Galvanized Steel Bracing.

SMC Bathroom Pod - SMC

- SMC ceilings、SMC wall、SMC floor with accessory
- SMC Bathroom pod, toilet bowl with cistern, bathroom vanity, wall cabinet with mirror, toughened glass for shower door, shower rail with mixer, towel Rail, exhaust fan, LED light, floor waste.

Illumination

- Whole house LED lighting system.

27 SQM MODERN STYLE FLAT ROOF DESIGN



MF-27

UNIT SPECIFICATIONS

1 | 1 | 1

External dimensions

Length 7.72m
Width 3.48m
Height 3.30m

Internal Dimensions

Length 7.52m
Width 3.28m
Height 2.62m

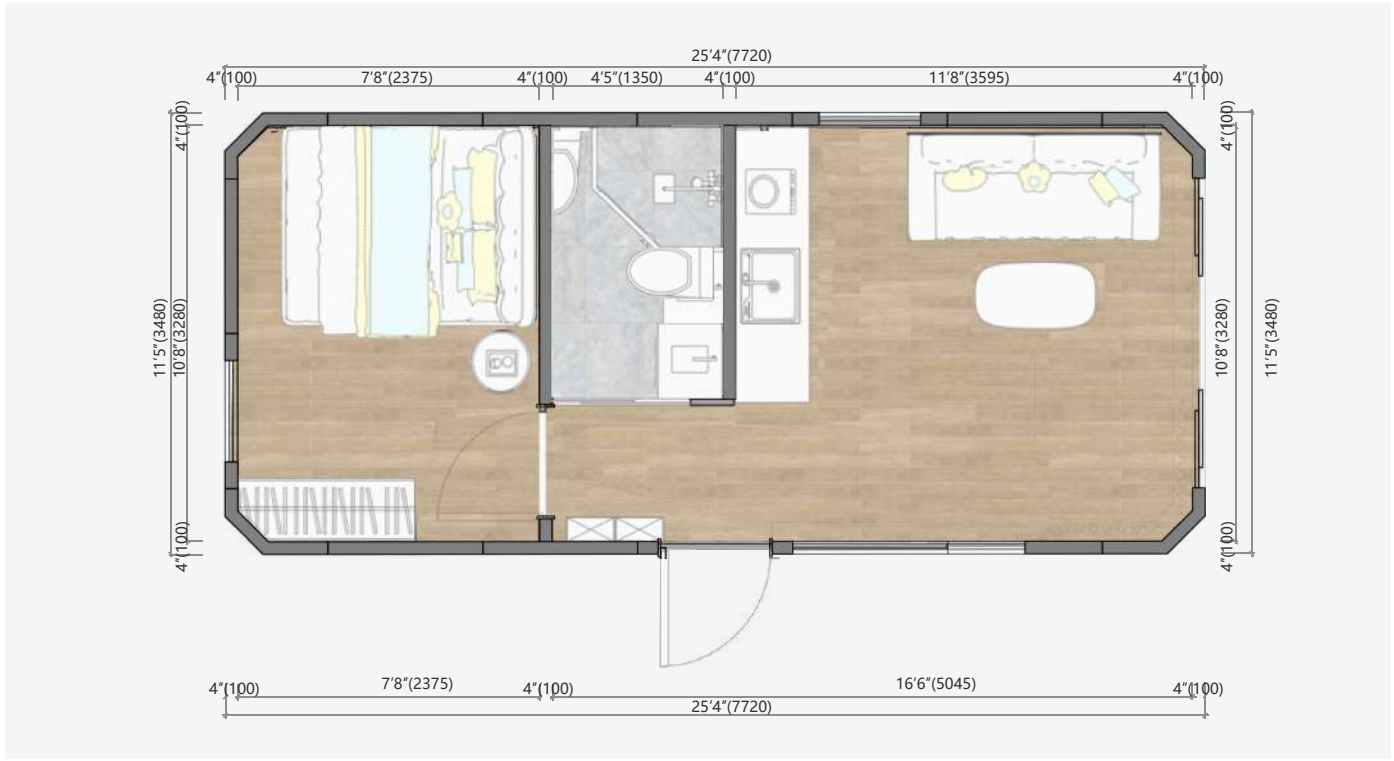
Area

TOTAL AREA: 26.80 m²

Unit Layout

Bedroom, Kitchen & Living,
Wet & Dry Toilet/Bath

THE HOUSE LAYOUT
CAN BE CUSTOMIZED
AND CHANGED TO
YOUR NEEDS.



Roof Module

- Roofing Aluminium Cladding with PVDF coating(PolyVinylidene Fluoride).
- Lightweight structure steel frame.
- Interior ceiling Aluminium Lining.
- Thermal break around the module.
- Solar panel installation rib.
- Per-wiring ducting.
- Fire retardant Injected PIR Insulation.

Wall Module

- Exterior Aluminium Cladding.
- Lightweight Galvanized Structure steel frame.
- Fire retardant Injected PIR Insulation.
- 8mm Carbon crystal wall board.
- Thermal break around the module.
- Per-wiring ducting.

Windows And Doors

- Thermal break Aluminium joinery.
- 6 +22A +6mm toughened Low-E double glazing.
- 900wide x 2100high Heavy duty insulated entry door with digital smart lock.

Finishing Floor

- SPC flooring 5mm + 1.5mm underlay, Wear layer 0.5mm, UV Resistant, Anti-Slip, Fire retardant and Moisture Proof .

Insulated Structure Floor Module

- Exterior Aluminium Cladding with PVDF coating.
- Lightweight structure steel frame.
- Fire retardant Injected PIR Insulation.
- Interior color steel sheet.
- Aluminium Extrusion Thermal break around the module.
- Per-wiring conduit.

Structure floor Module

- Galvanized Structural Steel floor joists frame.
- Waterproof 18mm structural F11 plywood floor.

Galvanized Steel Bearers

- Galvanized steel Bearers.
- 6 support legs for Bolt down coated with Hot dip galvanized.
- Galvanized Cross Beam.
- Galvanized Steel Bracing.

SMC Bathroom Pod - SMC

- SMC ceilings、SMC wall、SMC floor with accessory
- SMC Bathroom pod, toilet bowl with cistern, bathroom vanity, wall cabinet with mirror, toughened glass for shower door, shower rail with mixer, towel Rail, exhaust fan, LED light, floor waste.

Illumination

- Whole house LED lighting system.

31 SQM MODERN STYLE FLAT ROOF DESIGN



MF-31

UNIT SPECIFICATIONS

1 | 1 | 1

External dimensions

Length 8.94m
Width 3.48m
Height 3.30m

Internal Dimensions

Length 8.74m
Width 3.28m
Height 2.62m

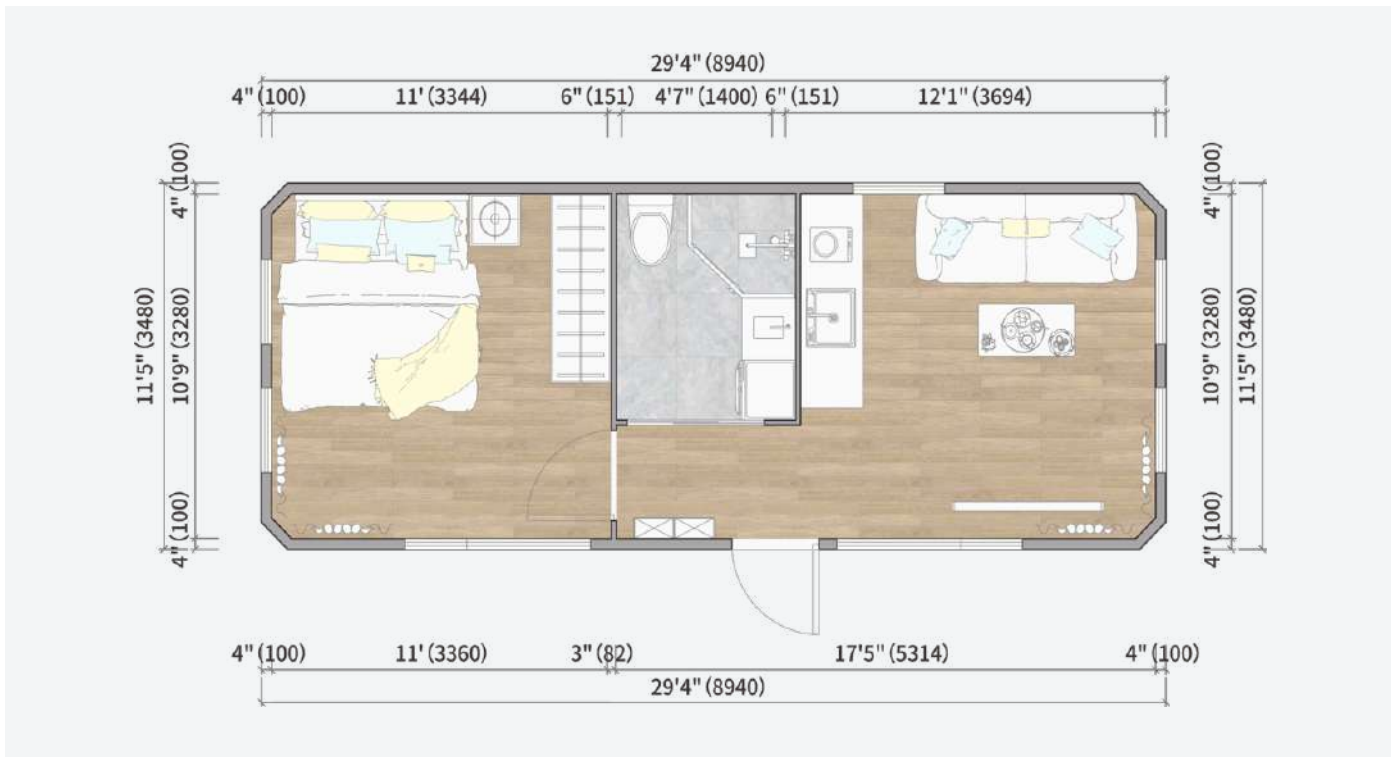
Area

TOTAL AREA: 31.10 m²

Unit Layout

Bedroom, Kitchen & Living,
Wet & Dry Toilet/Bath

THE HOUSE LAYOUT
CAN BE CUSTOMIZED
AND CHANGED TO
YOUR NEEDS.



Roof Module

- Roofing Aluminium Cladding with PVDF coating(PolyVinylidene Fluoride).
- Lightweight structure steel frame.
- Interior ceiling Aluminium Lining.
- Thermal break around the module.
- Solar panel installation rib.
- Per-wiring ducting.
- Fire retardant Injected PIR Insulation.

Wall Module

- Exterior Aluminium Cladding.
- Lightweight Galvanized Structure steel frame.
- Fire retardant Injected PIR Insulation.
- 8mm Carbon crystal wall board.
- Thermal break around the module.
- Per-wiring ducting.

Windows And Doors

- Thermal break Aluminium joinery.
- 6 +22A +6mm toughened Low-E double glazing.
- 900wide x 2100high Heavy duty insulated entry door with digital smart lock.

Finishing Floor

- SPC flooring 5mm + 1.5mm underlay, Wear layer 0.5mm, UV Resistant, Anti-Slip, Fire retardant and Moisture Proof .

Insulated Structure Floor Module

- Exterior Aluminium Cladding with PVDF coating.
- Lightweight structure steel frame.
- Fire retardant Injected PIR Insulation.
- Interior color steel sheet.
- Aluminium Extrusion Thermal break around the module.
- Per-wiring conduit.

Structure floor Module

- Galvanized Structural Steel floor joists frame.
- Waterproof 18mm structural F11 plywood floor.

Galvanized Steel Bearers

- Galvanized steel Bearers.
- 6 support legs for Bolt down coated with Hot dip galvanized.
- Galvanized Cross Beam.
- Galvanized Steel Bracing.

SMC Bathroom Pod - SMC

- SMC ceilings, SMC wall, SMC floor with accessory
- SMC Bathroom pod, toilet bowl with cistern, bathroom vanity, wall cabinet with mirror, toughened glass for shower door, shower rail with mixer, towel Rail, exhaust fan, LED light, floor waste.

Illumination

- Whole house LED lighting system.

40 SQM MODERN STYLE FLAT ROOF DESIGN



MF-40

UNIT SPECIFICATIONS

1 | 1 | 1

External dimensions

Length 11.38m
Width 3.48m
Height 3.30m

Internal Dimensions

Length 11.18m
Width 3.28m
Height 2.62m

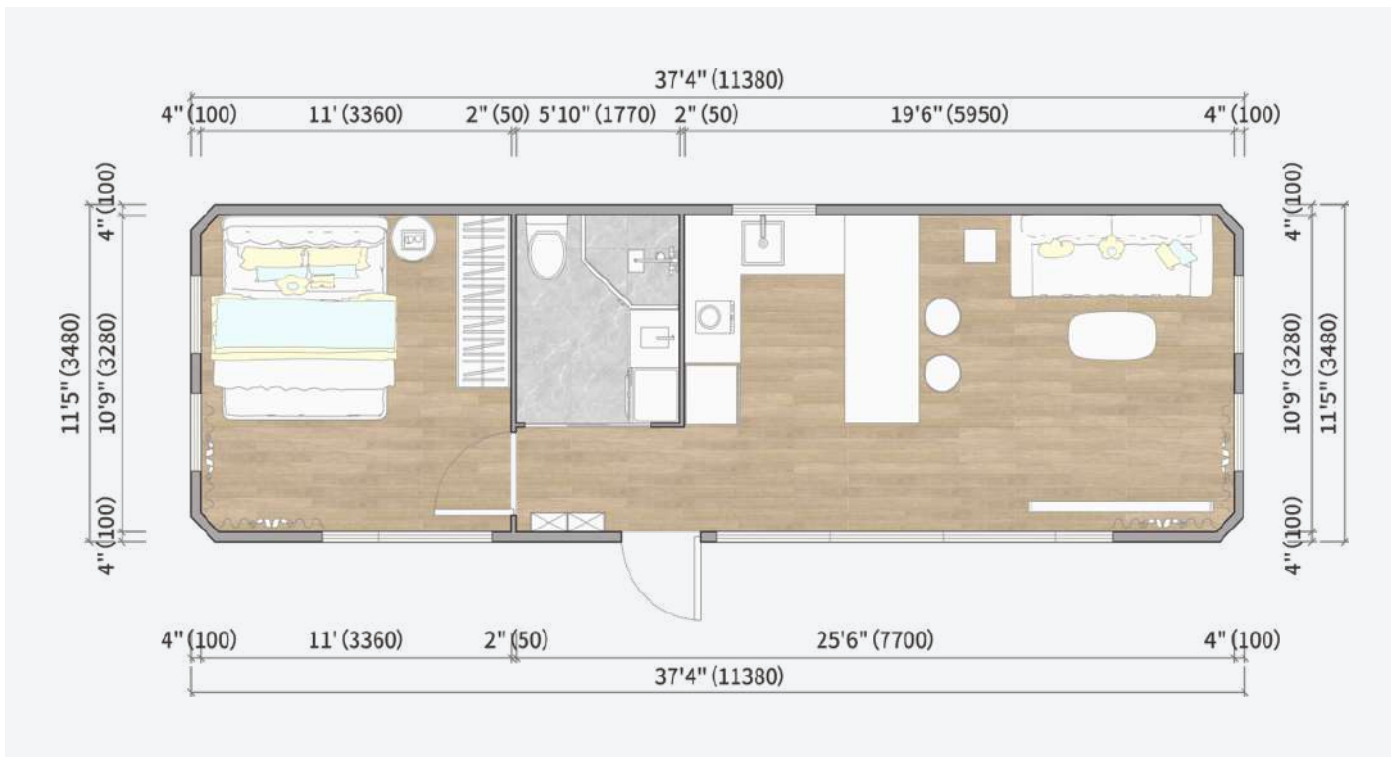
Area

TOTAL AREA: 39.60 m²

Unit Layout

Bedroom, Kitchen & Living,
Wet & Dry Toilet/Bath

THE HOUSE LAYOUT
CAN BE CUSTOMIZED
AND CHANGED TO
YOUR NEEDS.



Roof Module

- Roofing Aluminium Cladding with PVDF coating(PolyVinylidene Fluoride).
- Lightweight structure steel frame.
- Interior ceiling Aluminium Lining.
- Thermal break around the module.
- Solar panel installation rib.
- Per-wiring ducting.
- Fire retardant Injected PIR Insulation.

Wall Module

- Exterior Aluminium Cladding.
- Lightweight Galvanized Structure steel frame.
- Fire retardant Injected PIR Insulation.
- 8mm Carbon crystal wall board.
- Thermal break around the module.
- Per-wiring ducting.

Windows And Doors

- Thermal break Aluminium joinery.
- 6 +22A +6mm toughened Low-E double glazing.
- 900wide x 2100high Heavy duty insulated entry door with digital smart lock.

Finishing Floor

- SPC flooring 5mm + 1.5mm underlay, Wear layer 0.5mm, UV Resistant, Anti-Slip, Fire retardant and Moisture Proof .

Insulated Structure Floor Module

- Exterior Aluminium Cladding with PVDF coating.
- Lightweight structure steel frame.
- Fire retardant Injected PIR Insulation.
- Interior color steel sheet.
- Aluminium Extrusion Thermal break around the module.
- Per-wiring conduit.

Structure floor Module

- Galvanized Structural Steel floor joists frame.
- Waterproof 18mm structural F11 plywood floor.

Galvanized Steel Bearers

- Galvanized steel Bearers.
- 6 support legs for Bolt down coated with Hot dip galvanized.
- Galvanized Cross Beam.
- Galvanized Steel Bracing.

SMC Bathroom Pod - SMC

- SMC ceilings、SMC wall、SMC floor with accessory
- SMC Bathroom pod, toilet bowl with cistern, bathroom vanity, wall cabinet with mirror, toughened glass for shower door, shower rail with mixer, towel Rail, exhaust fan, LED light, floor waste.

Illumination

- Whole house LED lighting system.

48 SQM MODERN STYLE FLAT ROOF DESIGN



MF-48

UNIT SPECIFICATIONS

2 | 1 | 1

External dimensions

Length 13.82m
Width 3.48m
Height 3.30m

Internal Dimensions

Length 13.62m
Width 3.28m
Height 2.62m

Area

TOTAL AREA: 48.10 m²

Unit Layout

Bedroom, Kitchen & Living,
Wet & Dry Toilet/Bath

THE HOUSE LAYOUT
CAN BE CUSTOMIZED
AND CHANGED TO
YOUR NEEDS.



Roof Module

- Roofing Aluminium Cladding with PVDF coating(PolyVinylidene Fluoride).
- Lightweight structure steel frame.
- Interior ceiling Aluminium Lining.
- Thermal break around the module.
- Solar panel installation rib.
- Per-wiring ducting.
- Fire retardant Injected PIR Insulation.

Wall Module

- Exterior Aluminium Cladding.
- Lightweight Galvanized Structure steel frame.
- Fire retardant Injected PIR Insulation.
- 8mm Carbon crystal wall board.
- Thermal break around the module.
- Per-wiring ducting.

Windows And Doors

- Thermal break Aluminium joinery.
- 6 +22A +6mm toughened Low-E double glazing.
- 900wide x 2100high Heavy duty insulated entry door with digital smart lock.

Finishing Floor

- SPC flooring 5mm + 1.5mm underlay, Wear layer 0.5mm, UV Resistant, Anti-Slip, Fire retardant and Moisture Proof .

Insulated Structure Floor Module

- Exterior Aluminium Cladding with PVDF coating.
- Lightweight structure steel frame.
- Fire retardant Injected PIR Insulation.
- Interior color steel sheet.
- Aluminium Extrusion Thermal break around the module.
- Per-wiring conduit.

Structure floor Module

- Galvanized Structural Steel floor joists frame.
- Waterproof 18mm structural F11 plywood floor.

Galvanized Steel Bearers

- Galvanized steel Bearers.
- 6 support legs for Bolt down coated with Hot dip galvanized.
- Galvanized Cross Beam.
- Galvanized Steel Bracing.

SMC Bathroom Pod - SMC

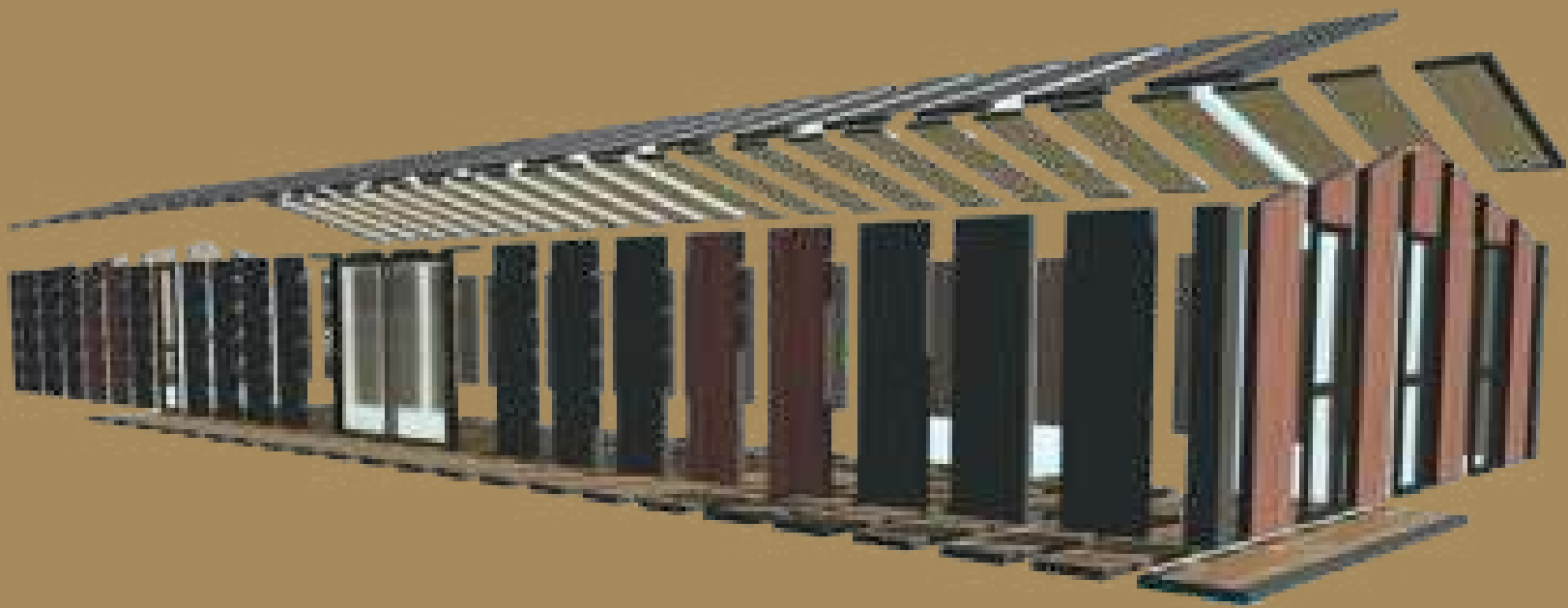
- SMC ceilings、SMC wall、SMC floor with accessory
- SMC Bathroom pod, toilet bowl with cistern, bathroom vanity, wall cabinet with mirror, toughened glass for shower door, shower rail with mixer, towel Rail, exhaust fan, LED light, floor waste.

Illumination

- Whole house LED lighting system.



OWN A HOME, NOT A DEBT. —



MODULAR HOUSE

MID-CENTURY STYLE SLOPED ROOF DESIGN

44 SQM MID-CENTURY STYLE SLOPED ROOF DESIGN



MD-44

UNIT SPECIFICATIONS

1 | 1 | 1

External dimensions

Length 7.20m
Width 6.10m
Height 2.90m-3.90m

Internal Dimensions

Length 7.00m
Width 5.09m
Height 2.50m-3.50m

Area

TOTAL AREA: 43.92 m²

Unit Layout

Bedroom, Kitchen & Living,
Wet & Dry Toilet/Bath

THE HOUSE LAYOUT
CAN BE CUSTOMIZED
AND CHANGED TO
YOUR NEEDS.



Roof Module

- Roofing Aluminium Cladding with PVDF coating(PolyVinylidene Fluoride).
- Lightweight structure steel frame .
- Fire retardant Injected PIR Insulation.
- Interior ceiling Aluminium Lining.
- Thermal break around the module.
- Solar panel installation rib.
- Per-wiring ducting.

Wall Module

- Exterior Aluminium Cladding.
- Lightweight Galvanized Structure steel frame.
- Fire retardant Injected PIR Insulation.
- Interior Aluminium Lining.
- Thermal break around the module.
- Per-wiring ducting.

Windows And Doors

- Thermal break Aluminium joinery.
- 6 +22A +6mm toughened Low-E double glazing.
- 2000 x 2200 Aluminium sliding entry door with lock.

Finishing Floor

- SPC flooring 5mm + 1.5mm underlay, Wear layer 0.5mm, UV Resistant, Anti-Slip, Fire retardant and Moisture Proof.

Insulated Structure Floor Module

- Galvanized Structural Steel floor joists frame.
- Waterproof 18mm structural F11 plywood floor.
- Fire retardant Injected PIR Insulation.
- Aluminium composite panel.

Galvanized Steel Bearers

- Galvanized steel Bearers.
- Galvanized Steel Supporting Legs.
- Galvanized Cross Beam.
- Galvanized Steel Bracing.

SMC Bathroom Pod - SMC

- SMC ceilings, SMC wall, SMC floor with accessory.
- SMC Bathroom pod, toilet bowl with cistern, bathroom vanity, wall cabinet with mirror, toughened glass for shower door, shower rail with mixer, towel Rail, exhaust fan, LED light, floor waste.

Illumination

- Whole house LED lighting system.

69 SQM MID-CENTURY STYLE SLOPED ROOF DESIGN



MD-69

UNIT SPECIFICATIONS

2 | 1 | 1

External dimensions

Length 9.60m
Width 7.02m
Height 2.90m-3.90m

Internal Dimensions

Length 9.40m
Width 7.00m
Height 2.50m-3.50m

Area

TOTAL AREA: 69.10 m²

Unit Layout

Bedroom, Kitchen & Living,
Wet & Dry Toilet/Bath

THE HOUSE LAYOUT
CAN BE CUSTOMIZED
AND CHANGED TO
YOUR NEEDS.



Roof Module

- Roofing Aluminium Cladding with PVDF coating(PolyVynliDene Fluoride).
- Lightweight structure steel frame .
- Fire retardant Injected PIR Insulation.
- Interior ceiling Aluminium Lining.
- Thermal break around the module.
- Solar panel installation rib.
- Per-wiring ducting.

Wall Module

- Exterior Aluminium Cladding.
- Lightweight Galvanized Structure steel frame.
- Fire retardant Injected PIR Insulation.
- Interior Aluminium Lining.
- Thermal break around the module.
- Per-wiring ducting.

Windows And Doors

- Thermal break Aluminium joinery.
- 6 +22A +6mm toughened Low-E double glazing.
- 2000 x 2200 Aluminium sliding entry door with lock.

Finishing Floor

- SPC flooring 5mm + 1.5mm underlay, Wear layer 0.5mm, UV Resistant, Anti-Slip, Fire retardant and Moisture Proof.

Insulated Structure Floor Module

- Galvanized Structural Steel floor joists frame.
- Waterproof 18mm structural F11 plywood floor.
- Fire retardant Injected PIR Insulation.
- Aluminium composite panel.

Galvanized Steel Bearers

- Galvanized steel Bearers.
- Galvanized Steel Supporting Legs.
- Galvanized Cross Beam.
- Galvanized Steel Bracing.

SMC Bathroom Pod - SMC

- SMC ceilings、SMC wall、SMC floor with accessory.
- SMC Bathroom pod, toilet bowl with cistern, bathroom vanity, wall cabinet with mirror, toughened glass for shower door, shower rail with mixer, towel Rail, exhaust fan, LED light, floor waste.

Illumination

- Whole house LED lighting system.

87 SQM MID-CENTURY STYLE SLOPED ROOF DESIGN



MD-87

UNIT SPECIFICATIONS

3 | 1 | 2

External dimensions

Length 12.10m
Width 7.20m
Height 2.90m-3.90m

Internal Dimensions

Length 11.90m
Width 7.00m
Height 2.50m-3.50m

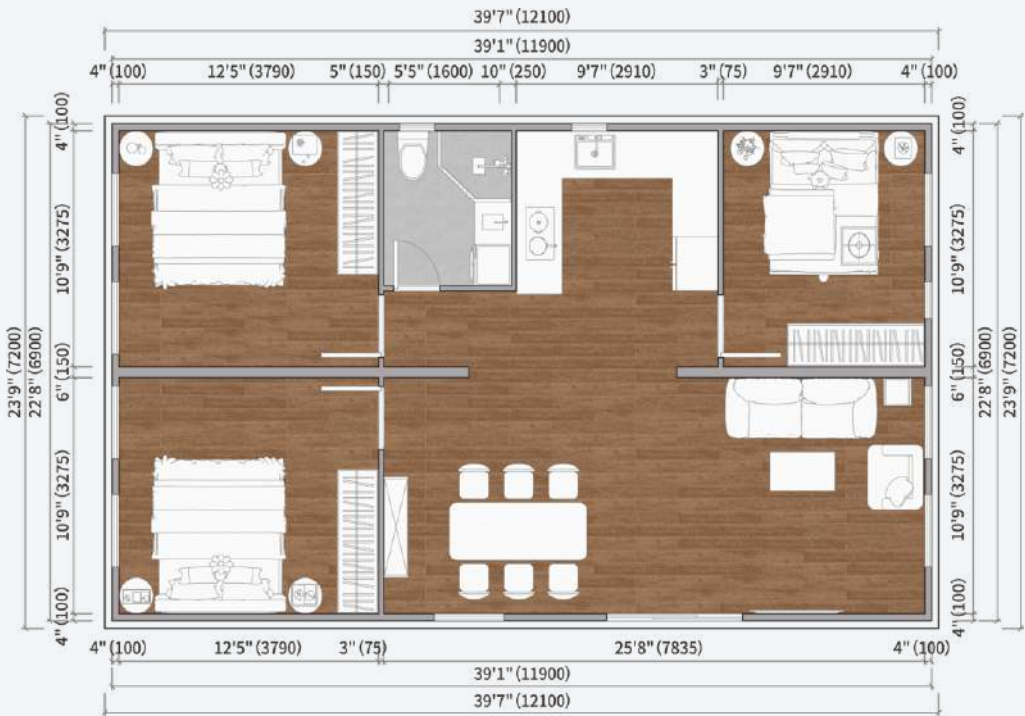
Area

TOTAL AREA: 87.10 m²

Unit Layout

Bedroom, Kitchen & Living,
Wet & Dry Toilet/Bath

THE HOUSE LAYOUT
CAN BE CUSTOMIZED
AND CHANGED TO
YOUR NEEDS.



Roof Module

- Roofing Aluminium Cladding with PVDF coating(PolyVynliDene Fluoride).
- Lightweight structure steel frame .
- Fire retardant Injected PIR Insulation.
- Interior ceiling Aluminium Lining.
- Thermal break around the module.
- Solar panel installation rib.
- Per-wiring ducting.

Wall Module

- Exterior Aluminium Cladding.
- Lightweight Galvanized Structure steel frame.
- Fire retardant Injected PIR Insulation.
- Interior Aluminium Lining.
- Thermal break around the module.
- Per-wiring ducting.

Windows And Doors

- Thermal break Aluminium joinery.
- 6 +22A +6mm toughened Low-E double glazing.
- 2000 x 2200 Aluminium sliding entry door with lock.

Finishing Floor

- SPC flooring 5mm + 1.5mm underlay, Wear layer 0.5mm, UV Resistant, Anti-Slip, Fire retardant and Moisture Proof.

Insulated Structure Floor Module

- Galvanized Structural Steel floor joists frame.
- Waterproof 18mm structural F11 plywood floor.
- Fire retardant Injected PIR Insulation.
- Aluminium composite panel.

Galvanized Steel Bearers

- Galvanized steel Bearers.
- Galvanized Steel Supporting Legs.
- Galvanized Cross Beam.
- Galvanized Steel Bracing.

SMC Bathroom Pod - SMC

- SMC ceilings、SMC wall、SMC floor with accessory.
- SMC Bathroom pod, toilet bowl with cistern, bathroom vanity, wall cabinet with mirror, toughened glass for shower door, shower rail with mixer, towel Rail, exhaust fan, LED light, floor waste.

Illumination

- Whole house LED lighting system.

23 SQM MID-CENTURY STYLE SLOPED ROOF DESIGN



MS-23

UNIT SPECIFICATIONS

1 | 1

External dimensions

Length 6.10m
Width 3.70m
Height 2.70m-3.70m

Internal Dimensions

Length 5.90m
Width 3.20m
Height 2.50m-3.30m

Area

TOTAL AREA: 22.60m²

Unit Layout

Bedroom, Kitchen & Living,
Wet & Dry Toilet/Bath

THE HOUSE LAYOUT
CAN BE CUSTOMIZED
AND CHANGED TO
YOUR NEEDS.



Roof Module

- Roofing Aluminium Cladding with PVDF coating(PolyVinylidene Fluoride).
- Lightweight structure steel frame .
- Fire retardant Injected PIR Insulation.
- Interior ceiling Aluminium Lining.
- Thermal break around the module.
- Solar panel installation rib.
- Per-wiring ducting.

Wall Module

- Exterior Aluminium Cladding.
- Lightweight Galvanized Structure steel frame.
- Fire retardant Injected PIR Insulation.
- Interior Aluminium Lining.
- Thermal break around the module.
- Per-wiring ducting.

Windows And Doors

- Thermal break Aluminium joinery.
- 6 +22A +6mm toughened Low-E double glazing.
- 2000 x 2200 Aluminium sliding entry door with lock.

Finishing Floor

- SPC flooring 5mm + 1.5mm underlay, Wear layer 0.5mm, UV Resistant, Anti-Slip, Fire retardant and Moisture Proof.

Insulated Structure Floor Module

- Galvanized Structural Steel floor joists frame.
- Waterproof 18mm structural F11 plywood floor.
- Fire retardant Injected PIR Insulation.
- Aluminium composite panel.

Galvanized Steel Bearers

- Galvanized steel Bearers.
- Galvanized Steel Supporting Legs.
- Galvanized Cross Beam.
- Galvanized Steel Bracing.

SMC Bathroom Pod - SMC

- SMC ceilings, SMC wall, SMC floor with accessory.
- SMC Bathroom pod, toilet bowl with cistern, bathroom vanity, wall cabinet with mirror, toughened glass for shower door, shower rail with mixer, towel Rail, exhaust fan, LED light, floor waste.

Illumination

- Whole house LED lighting system.

MID-CENTURY STYLE SLOPED ROOF DESIGN

MS-36

UNIT SPECIFICATIONS

1 | 1 | 1

External dimensions

Length 9.60m
Width 3.70m
Height 2.70m-3.70m

Internal Dimensions

Length 9.40m
Width 3.20m
Height 2.50m-3.30m

Area

TOTAL AREA: 35.50m²

Unit Layout

Bedroom, Kitchen & Living,
Wet & Dry Toilet/Bath

MS-45

UNIT SPECIFICATIONS

1 | 1 | 1

External dimensions

Length 12.10m
Width 3.70m
Height 2.70m-3.70m

Internal Dimensions

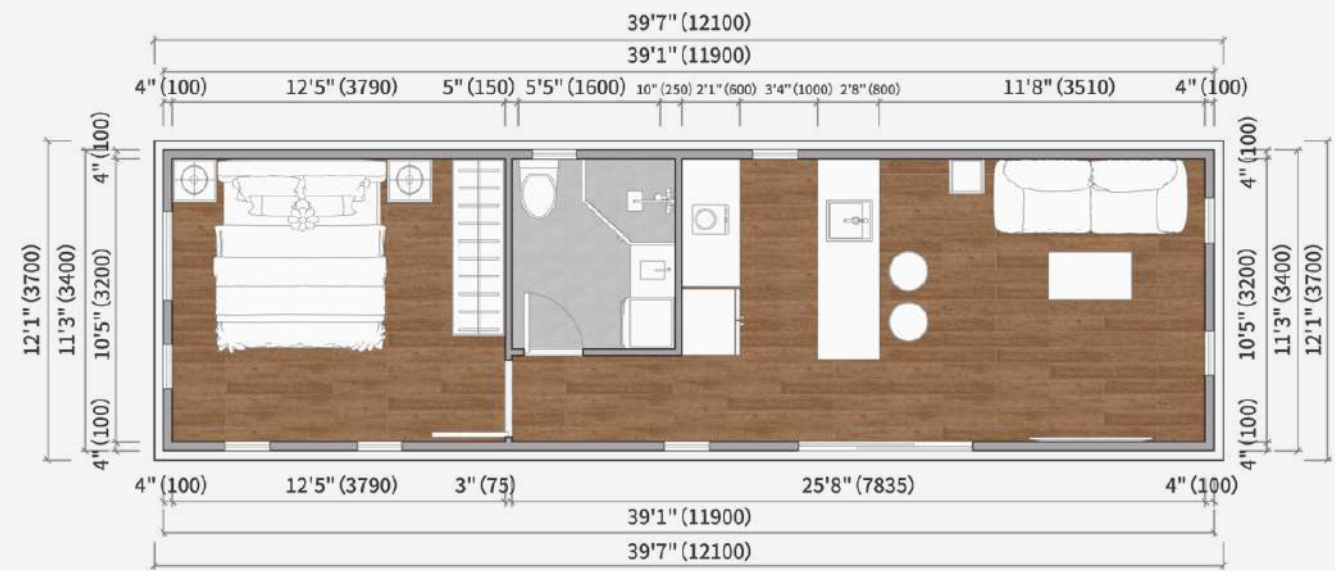
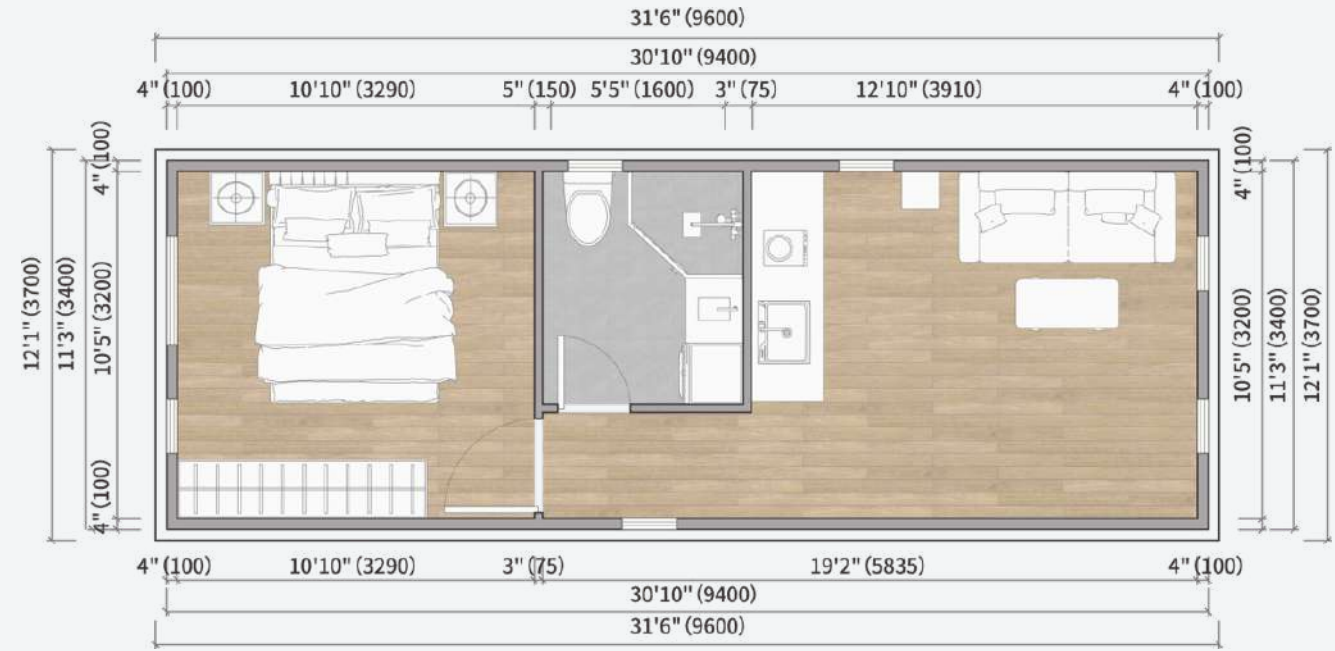
Length 11.90m
Width 3.20m
Height 2.50m-3.30m

Area

TOTAL AREA: 44.80m²

Unit Layout

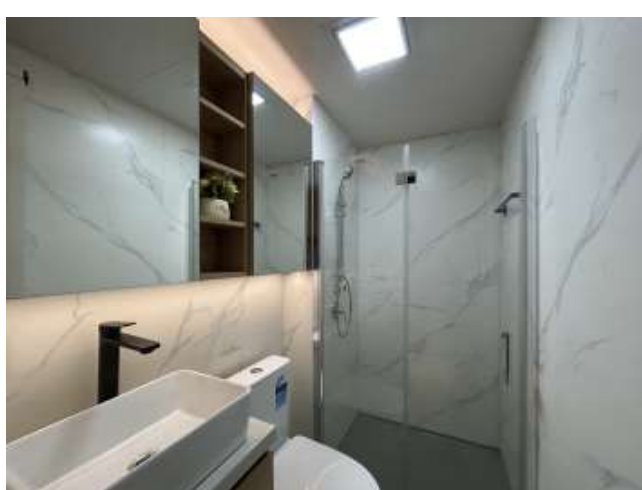
Bedroom, Kitchen & Living,
Wet & Dry Toilet/Bath



THE HOUSE LAYOUT CAN BE CUSTOMIZED AND CHANGED TO YOUR NEEDS.

INTERIOR DECORATION

Our modular house's interior quality for tiny houses that far exceeds the local New Zealand market, enhancing both quality and the smart living experience.



The interior design and layout of the house can be customized to meet your specific needs.



OWN A HOME, NOT A DEBT. —



MODERN CABINS

WHAT IS MODERN CABIN



MODERN CABIN — THE ULTIMATE PRE-FABRICATED LIVING & WORKING SPACE

The Modern Cabin is an advanced, pre-fabricated living and working space that seamlessly blends industrial durability with contemporary aesthetics. Built with a high-strength steel frame and lightweight aluminum exterior, it offers exceptional weather resistance, long-term durability, and energy efficiency.

Unlike traditional modular structures, Modern Cabin is fully manufactured in our factory, including walls, electrical systems, plumbing, windows, doors, lighting, and interior finishes. It requires no on-site assembly—simply place it on location, and it's ready for use.

Whether for personal retreats, additional living space, mobile offices, commercial showrooms, or boutique accommodations, the Modern Cabin provides a high-end, quick-deploy solution tailored to diverse needs.



The Modern Cabin is designed for premium private users, businesses, and the hospitality industry, offering a ready-to-use, fully customizable, and high-quality space solution. Its zero on-site construction, rapid deployment, and adaptable aesthetics make it an ideal choice for modern living and commercial applications.

WHAT IS MODERN CABIN

HIGH-STRENGTH STEEL & ALUMINUM CONSTRUCTION

Designed for maximum durability, the reinforced steel frame and aluminum-clad walls provide superior wind and earthquake resistance, ensuring decades of reliable performance in various environments.

100% FACTORY-BUILT – READY FOR INSTANT USE

Unlike traditional modular buildings, Modern Cabin arrives fully built. All components, including insulation, electrical wiring, plumbing, and finishes, are pre-installed at the factory. Simply transport and place it on-site—no assembly required!

FULLY CUSTOMIZABLE INTERIOR & EXTERIOR DESIGN

- Exterior & interior wall materials and colors are fully customizable, allowing you to create a look that matches your style or business identity.
- Choose from modern, industrial, or luxury finishes to tailor the cabin to your specific needs.

VERSATILE APPLICATIONS

- Personal Use: Independent living space, guest house, home office, private studio.
- Commercial Use: Boutique hotels, coffee shops, retail pop-ups, mobile workspaces.
- Tourism & Hospitality: High-end accommodations for eco-resorts, farms, and vacation retreats.

ENERGY EFFICIENT & COMFORTABLE

- High-performance thermal insulation ensures optimal indoor climate, reducing heating and cooling costs.
- Double-glazed windows enhance soundproofing and energy efficiency.
- Smart lighting & electrical system with optional solar panel integration for sustainable energy use.



The main frame is hot-dip galvanized with 4mm thickness, which is safe and firm. Hot-dip galvanizing has rust resistance, heat resistance, corrosion resistance, and longer service life. The overall structural design enhances wind and earthquake resistance and can withstand earthquakes of at least magnitude 7.

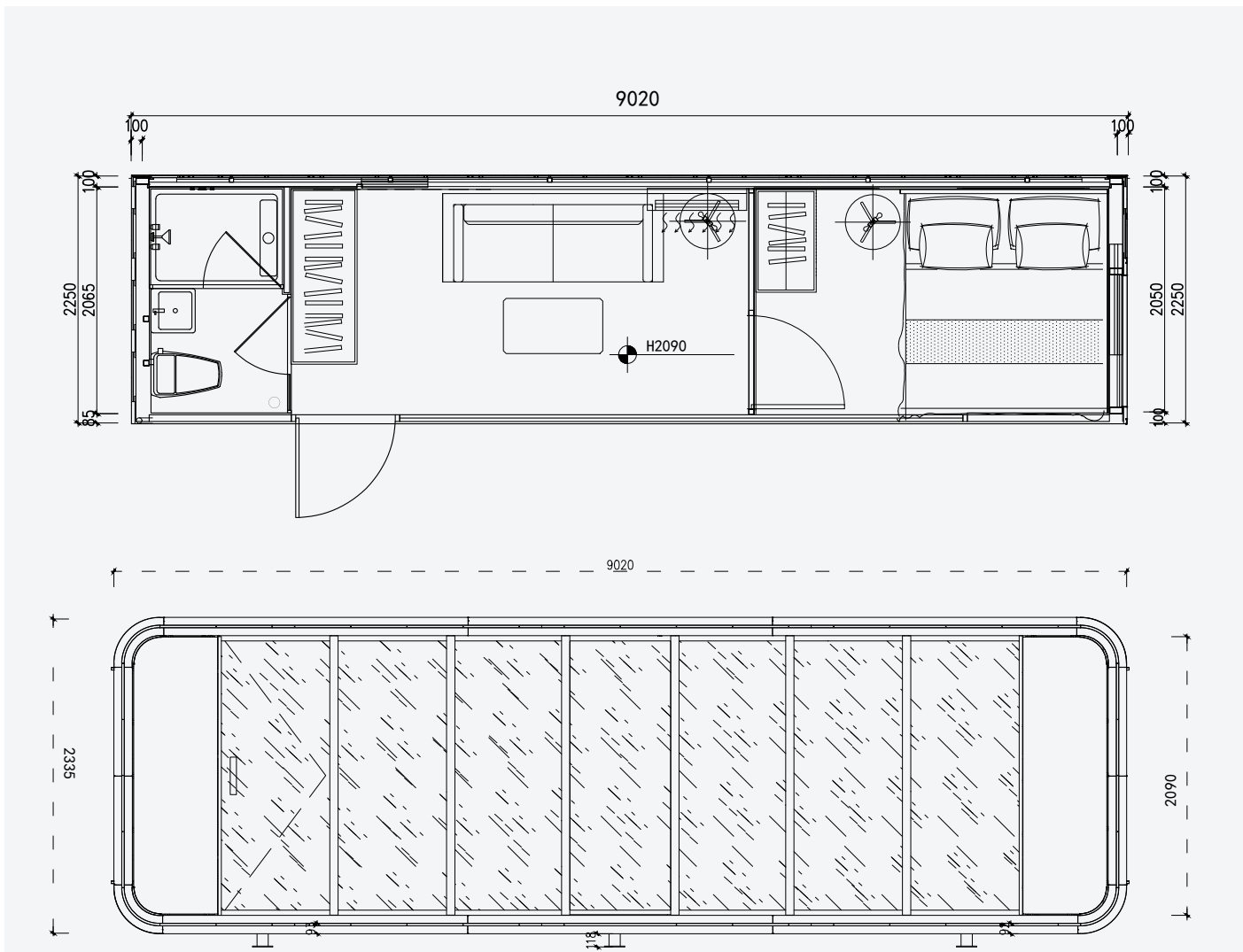


Adopts 2.5mm thickness aviation aluminum plate, sprayed with double-layer fluorocarbon paint, durable.



It adopts 5+15A+5 hollow heat insulation tempered glass, which has good heat insulation and prevents noise and is more comfortable to live in.

20 SQM MODERN CABIN



Steel Structure

- Hot-dip galvanized frame structure.

Shell

- Aluminum module.

Outer Surface

- Outdoor Epoxy baking paint.

Illumination

- Whole house LED lighting system.

Cabinet

- Metallic-Finish Laminated
- Cabinet Surfaces: Quartz Stone / Porcelain Slab

Interior Wall

- Standard color integrated wall panel, wall module.
- Carbon Fiber-Reinforced Board.

Flooring

- Environmentally friendly stone plastic floor.

Heat Preservation / Insulation

- Environmentally friendly polyurethane spraying.

Water and Electricity

- Whole house LED lighting system.

Cabinet

- Cabinet Surfaces: Quartz Stone / Porcelain Slab

Windows And Doors

- Thermal break Aluminium joinery.
- 6 +12A +6mm toughened Low-E double glazing.
- Heavy duty insulated entry door with digital smart lock.

Bathing Area

- Bathroom Door: Privacy glass door.
- Bathroom Floor: Marble/non-slip tiled floor.
- Bathroom Cabinet: Customized slate bathroom cabinet/smart mirror.
- Fixtures: Faucet, bathing sprinkler, floor drain.
- Flooring: Marble with Anti-Slip Tiles / Metallic-Finish Board
- Exhaust Fan.
- Toilet.

A9

UNIT SPECIFICATIONS

1 | 1 | 1

External dimensions

Length 9.02m

Width 2.25m

Height 2.33m

Internal Dimensions

Length 8.82m

Width 2.05m

Height 2.10m

Area

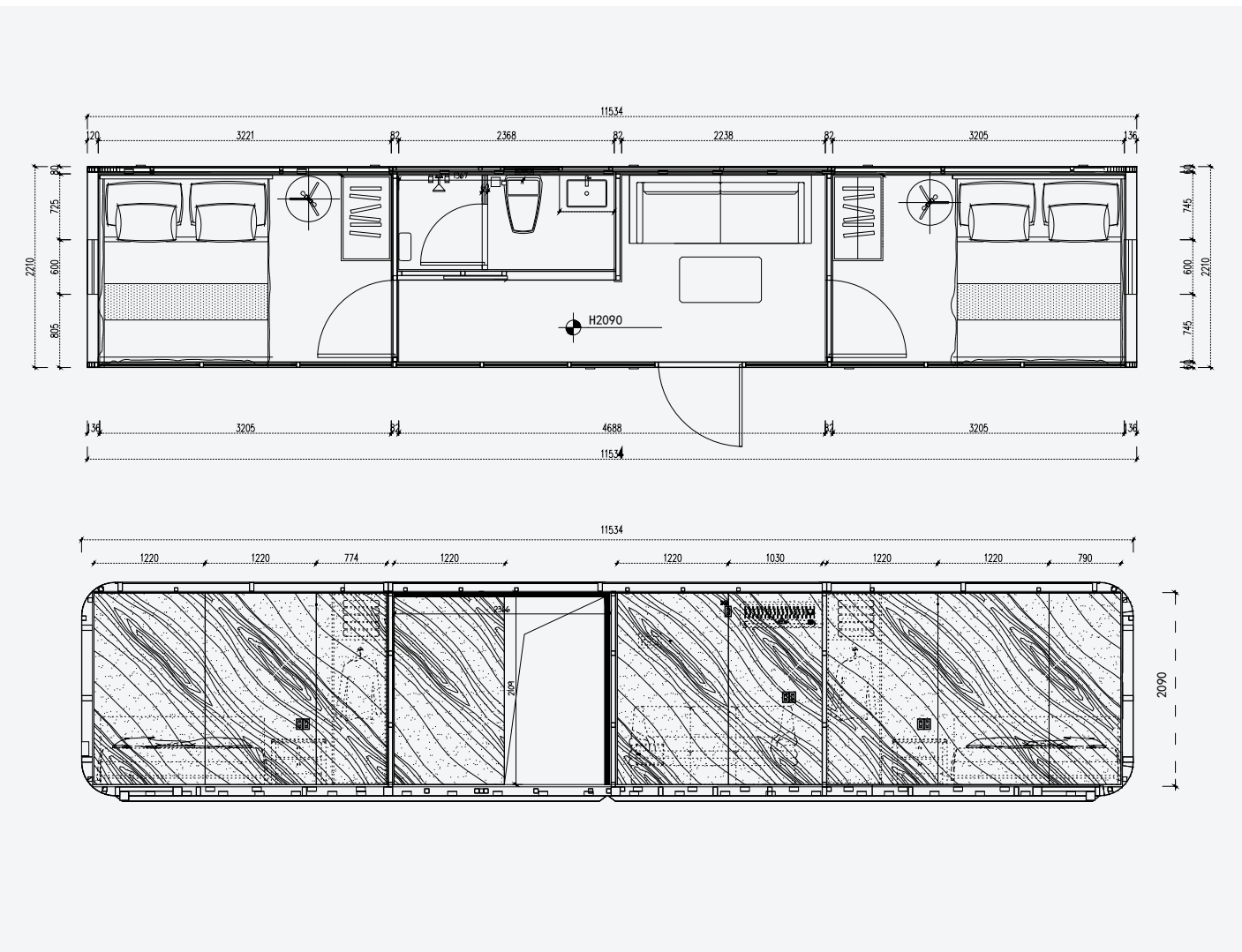
TOTAL AREA: 20.21 m²

Unit Layout

Bedroom, Kitchen & Living,
Wet & Dry Toilet/Bath

THE HOUSE LAYOUT CAN BE
CUSTOMIZED AND
CHANGED TO YOUR NEEDS.

26 SQM MODERN CABIN



A12

UNIT SPECIFICATIONS

2 | 1 | 1

External dimensions

Length 11.50m
Width 2.21m
Height 2.33m

Internal Dimensions

Length 11.27m
Width 2.05m
Height 2.10m

Area

TOTAL AREA: 25.41 m²

Unit Layout

Bedroom, Kitchen & Living,
Wet & Dry Toilet/Bath

Steel Structure

- Hot-dip galvanized frame structure.

Shell

- Aluminum module.

Outer Surface

- Outdoor Epoxy baking paint.

Illumination

- Whole house LED lighting system.

Cabinet

- Metallic-Finish Laminated
- Cabinet Surfaces: Quartz Stone / Porcelain Slab

Interior Wall

- Standard color integrated wall panel, wall module.
- Carbon Fiber-Reinforced Board.

Flooring

- Environmentally friendly stone plastic floor.

Heat Preservation / Insulation

- Environmentally friendly polyurethane spraying.

Water and Electricity

- Whole house LED lighting system.

Cabinet

- Cabinet Surfaces: Quartz Stone / Porcelain Slab

Windows And Doors

- Thermal break Aluminium joinery.
- 6 +12A +6mm toughened Low-E double glazing.
- Heavy duty insulated entry door with digital smart lock.

Bathing Area

- Bathroom Door: Privacy glass door.
- Bathroom Floor: Marble/non-slip tiled floor.
- Bathroom Cabinet: Customized slate bathroom cabinet/smart mirror.
- Fixtures: Faucet, bathing sprinkler, floor drain.
- Flooring: Marble with Anti-Slip Tiles / Metallic-Finish Board
- Exhaust Fan.
- Toilet.

THE HOUSE LAYOUT CAN BE
CUSTOMIZED AND
CHANGED TO YOUR NEEDS.

INDULGE IN THE SPLENDOR OF MODERN LIVING WITH OUR SPACIOUS GRAND
RESIDENCE, A BLEND OF INNOVATIVE DESIGN AND FUTURISTIC ELEGANCE

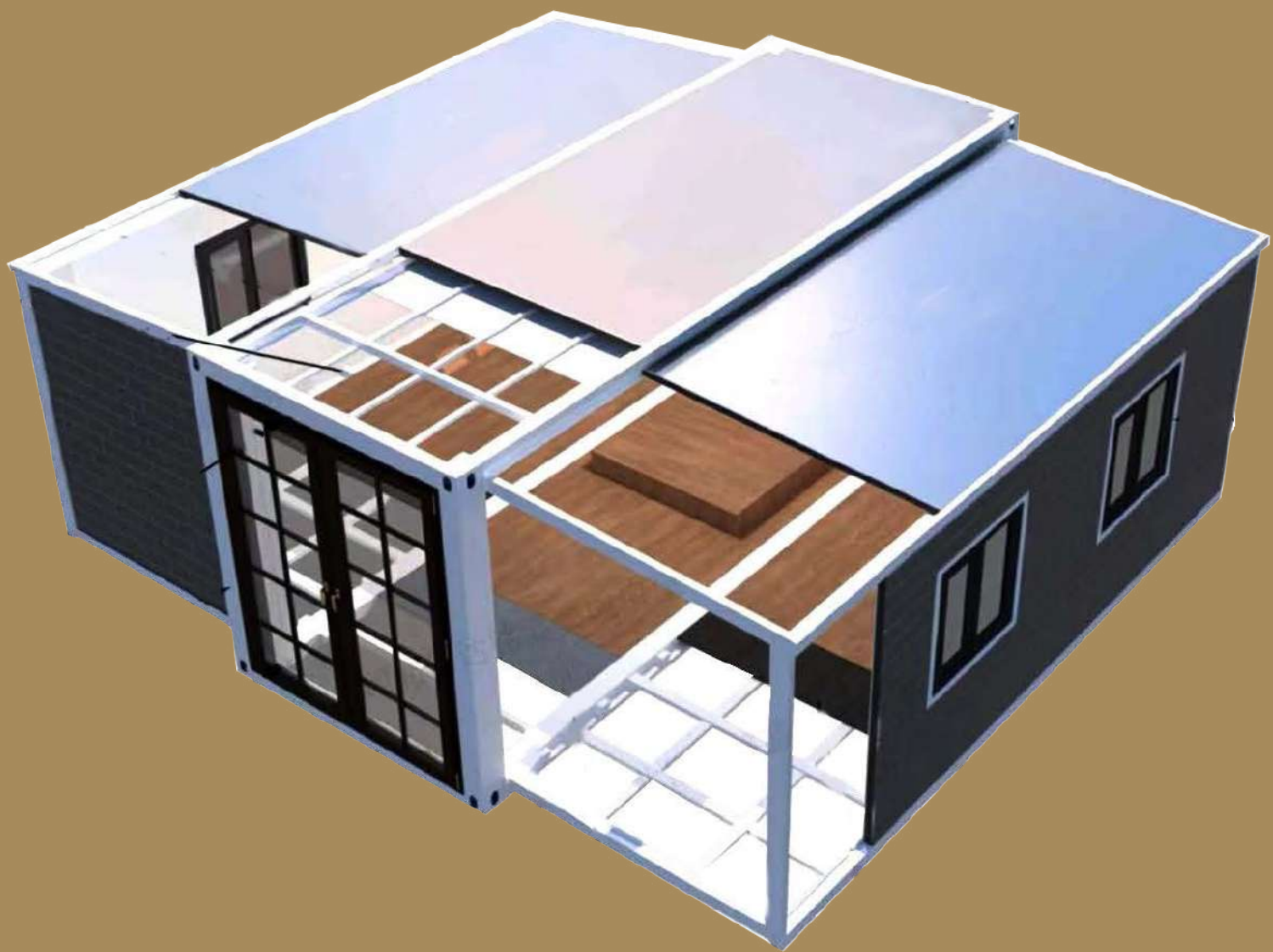
GALLERY



The interior design and layout of the house can be customized to meet your specific needs.



OWN A HOME, NOT A DEBT. —



**EXPANDABLE
FOLDING HOUSE**

WHAT IS EXPANDABLE FOLDING HOUSE

The Expandable Unit is a rapidly deployable, portable structure designed for quick assembly and easy disassembly. Ideal for diverse applications such as home extensions, temporary housing, holiday accommodations and more, it combines versatility with functionality.

Constructed with a fully galvanized steel framework and eco-friendly composite materials, this unit is lightweight yet exceptionally durable. Its environmentally conscious design ensures recyclability and reusability, aligning with sustainable practices.

The Expandable Unit delivers flexible living or activity spaces within minimal timeframes, offering a practical solution for dynamic needs. Whether for short-term projects or emergency scenarios, its robust build and portability make it a reliable choice across residential, commercial, and humanitarian contexts.



01 THERMAL INSULATION & ENERGY EFFICIENCY

The metal composite panels exhibit exceptional thermal insulation properties, surpassing traditional exterior wall materials in both cold and heat resistance. This significantly reduces heating and cooling demands, lowering energy consumption and operational costs for a highly cost-effective solution.

02 EASY INSTALLATION & COST SAVINGS

With a simple, fast installation process adaptable to all seasons and terrains, these panels drastically shorten project timelines. This efficiency accelerates construction progress while reducing labour and overall building expenses.

03 FIRE-RESISTANT & WATERPROOF

Specially treated for durability, the panels offer excellent fire resistance and corrosion protection. Their integrated structure eliminates common waterproofing issues seen in traditional cladding, preventing water ingress and moisture damage—even in extreme climates. This enhances building longevity and structural integrity.

04 NOISE REDUCTION & ACOUSTIC COMFORT

Featuring a high-density polyurethane core with closed-cell foam technology, the panels provide superior sound insulation, ensuring quieter and more comfortable indoor environments.

05 LIGHTWEIGHT & EARTHQUAKE-RESISTANT

The lightweight yet robust design minimises structural load while offering high impact resistance. Ideal for seismic-prone areas, the panels enhance building stability and reduce earthquake-related risks.

06 ECO-FRIENDLY & LONG-LASTING

Constructed from chemically stable, non-toxic materials, the panels are recyclable and resistant to mould, UV radiation, and environmental degradation. Their durability and low-maintenance surface ensure a long lifespan, aligning with sustainable construction practices.

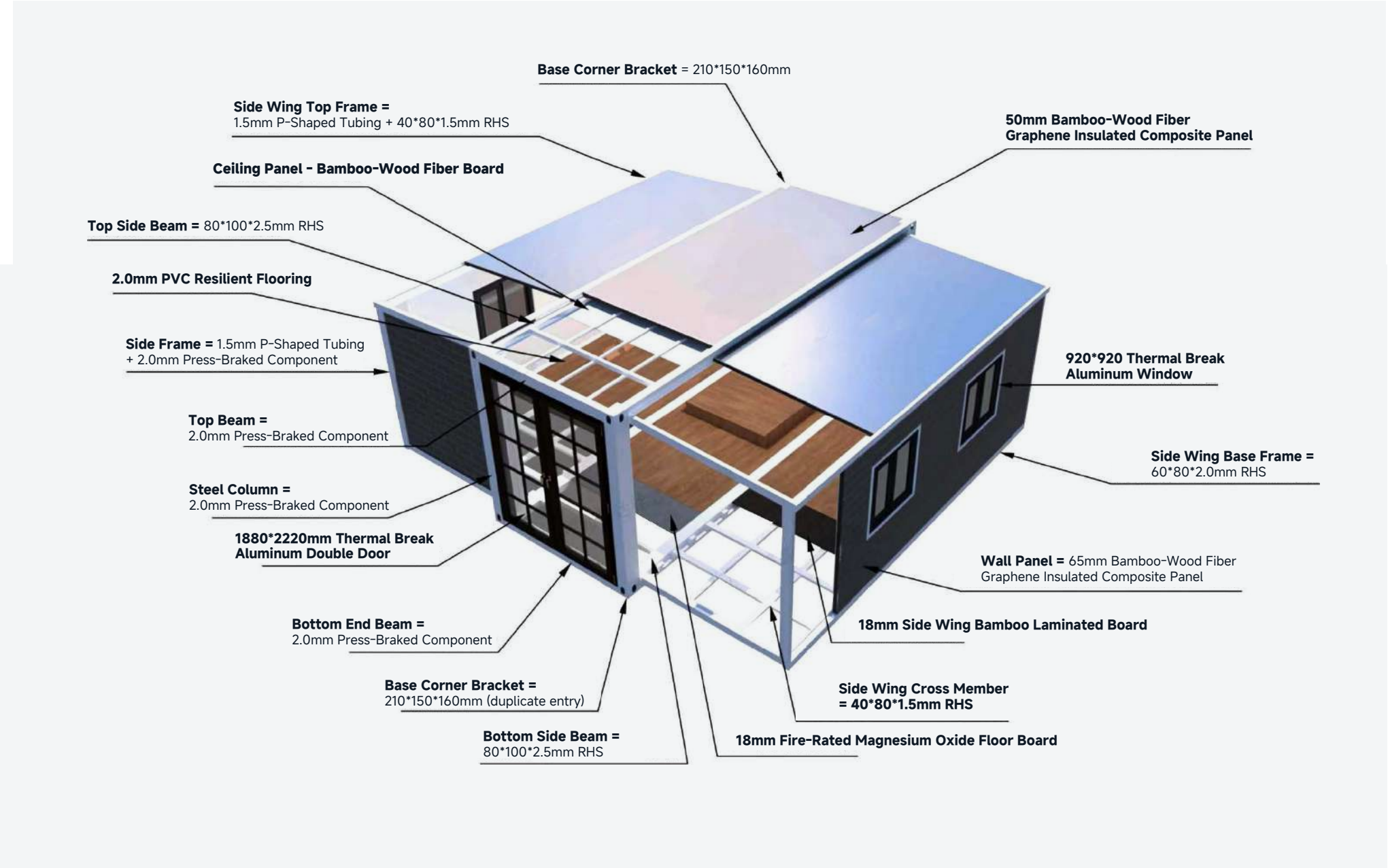
07 AESTHETIC VERSATILITY

Choose from over patterns and colour combinations to achieve bespoke architectural designs. The panels enable creative freedom, harmonising with diverse architectural styles for visually striking exteriors.

08 BROAD APPLICATIONS

Suitable for residential, commercial, and public projects—including offices, villas, municipal facilities, retrofits, and landscape structures—the panels are ideal for steel, lightweight, and framed constructions. They excel in energy-efficient renovations and interior/exterior design upgrades.

SPECIFICATIONS - WHAT'S INCLUDED



Electrical

- AS/NZS electrical cable, power points & power board

Illumination

- Whole house LED lighting system.

Bathing Area

- Shower - Full-width shower, shower rail, rainmaker shower head and frosted privacy glass door
- Toilet - Soft close toilet lid
- Vanity - Sink with stainless steel tap and vanity with mirror

ALL ASPECTS OF THE EXTENSION UNIT, INCLUDING INTERIOR AND EXTERIOR WALL PANELS, KITCHEN CABINETS, BATHROOM FIXTURES, LIGHTING, DOORS AND WINDOWS, EXTERNAL WALL STRUCTURES, AND INTERIOR LAYOUTS, CAN BE FULLY CUSTOMIZED TO MEET YOUR SPECIFIC REQUIREMENTS.

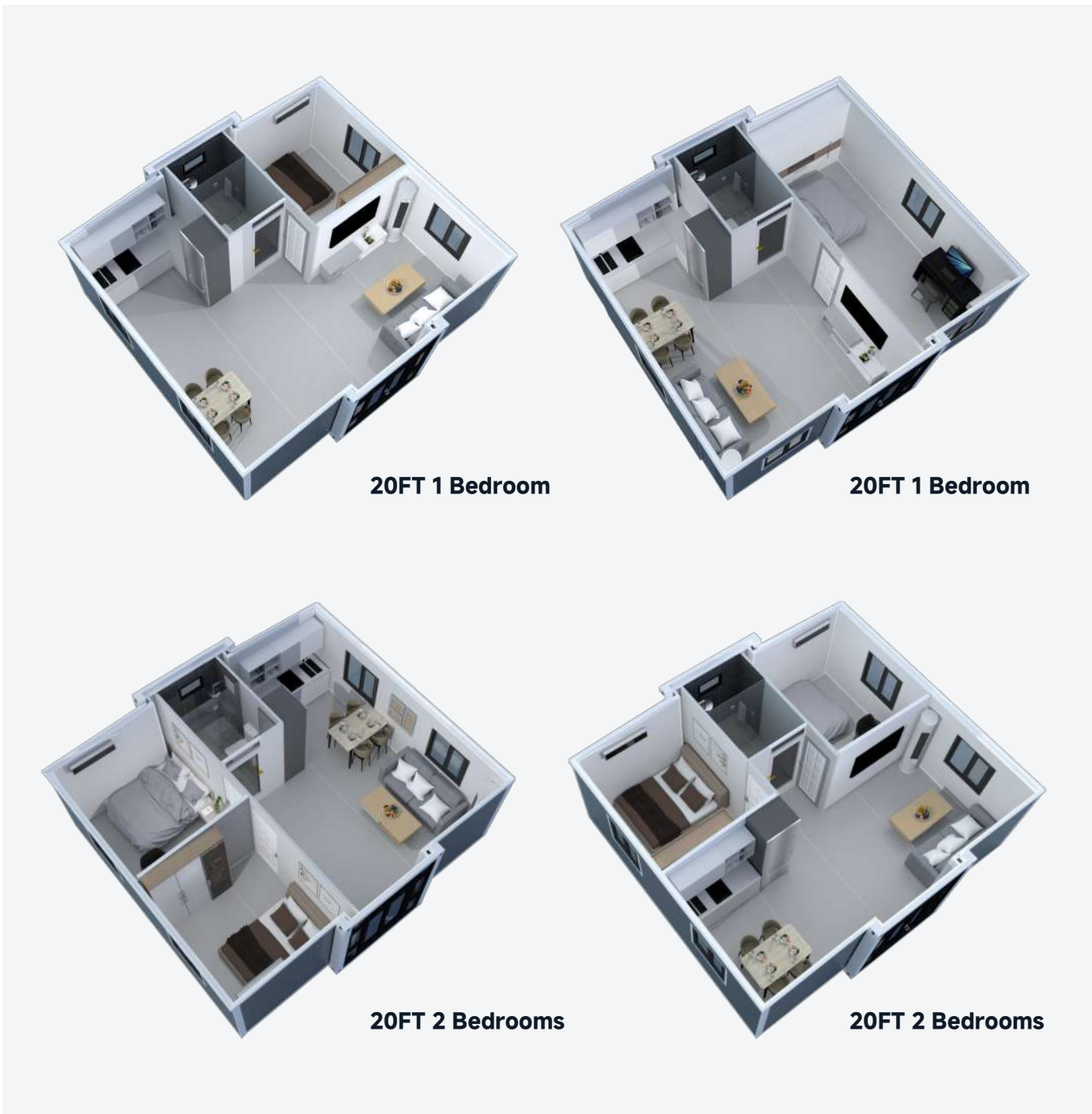
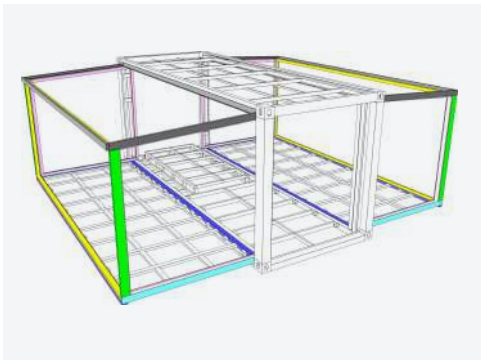
SOME OF EXTERIOR WALL PANELS STYLE



SOME OF INTERIOR WALL PANELS STYLE



37 SQM 20 FEET EXPANDABLE FOLDING HOUSE



FE20

UNIT SPECIFICATIONS

Expanded Dimensions

Length 5.90m
Width 6.30m
Height 2.48m

Internal Dimensions

Length 5.46m
Width 6.14m
Height 2.24m

Area

TOTAL AREA: 37.00 m²

Folded Dimensions

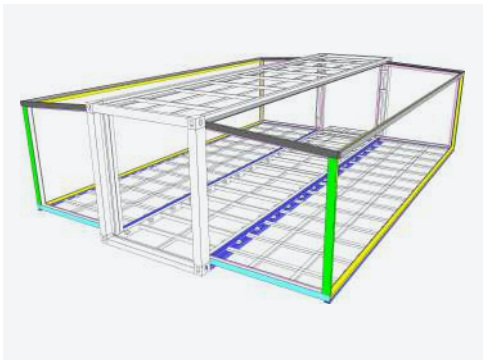
(L)5.90m * (W)2.20m * (H)2.48m

Unit Layout

1 - 2 | 1 | 1 - 2

THE HOUSE LAYOUT CAN BE
CUSTOMIZED AND
CHANGED TO YOUR NEEDS.

56 SQM 30 FEET EXPANDABLE FOLDING HOUSE



FE30

UNIT SPECIFICATIONS

Expanded Dimensions

Length 9.00m
Width 6.22m
Height 2.48m

Internal Dimensions

Length 8.54m
Width 6.06m
Height 2.24m

Area

TOTAL AREA: 56.00 m²

Folded Dimensions

(L)9.00m * (W)2.20m * (H)2.48m

Unit Layout

1 - 3 | 1 | 1 - 2

THE HOUSE LAYOUT CAN BE
CUSTOMIZED AND
CHANGED TO YOUR NEEDS.



30FT 2 Bedroom



30FT 3 Bedroom



30FT 2 Bedrooms



30FT 3 Bedrooms

72 SQM 40 FEET EXPANDABLE FOLDING HOUSE



FE40

UNIT SPECIFICATIONS

Expanded Dimensions

Length 11.80m

Width 6.22m

Height 2.48m

Internal Dimensions

Length 11.54m

Width 6.06m

Height 2.24m

Area

TOTAL AREA: 72.00 m²

Folded Dimensions

(L)11.80m * (W)2.20m * (H)2.48m

Unit Layout

 1 - 3 |  1 |  1 - 2

THE HOUSE LAYOUT CAN BE
CUSTOMIZED AND
CHANGED TO YOUR NEEDS.

WHAT IS EXPANDABLE FOLDING HOUSE

The Expandable Unit is a rapidly deployable, portable structure designed for quick assembly and easy disassembly. Ideal for diverse applications such as home extensions, temporary housing, holiday accommodations and more, it combines versatility with functionality.

Constructed with a fully galvanized steel framework and eco-friendly composite materials, this unit is lightweight yet exceptionally durable. Its environmentally conscious design ensures recyclability and reusability, aligning with sustainable practices.

The Expandable Unit delivers flexible living or activity spaces within minimal timeframes, offering a practical solution for dynamic needs. Whether for short-term projects or emergency scenarios, its robust build and portability make it a reliable choice across residential, commercial, and humanitarian contexts.



01 THERMAL INSULATION & ENERGY EFFICIENCY

The metal composite panels exhibit exceptional thermal insulation properties, surpassing traditional exterior wall materials in both cold and heat resistance. This significantly reduces heating and cooling demands, lowering energy consumption and operational costs for a highly cost-effective solution.

02 EASY INSTALLATION & COST SAVINGS

With a simple, fast installation process adaptable to all seasons and terrains, these panels drastically shorten project timelines. This efficiency accelerates construction progress while reducing labour and overall building expenses.

03 FIRE-RESISTANT & WATERPROOF

Specially treated for durability, the panels offer excellent fire resistance and corrosion protection. Their integrated structure eliminates common waterproofing issues seen in traditional cladding, preventing water ingress and moisture damage—even in extreme climates. This enhances building longevity and structural integrity.

04 NOISE REDUCTION & ACOUSTIC COMFORT

Featuring a high-density polyurethane core with closed-cell foam technology, the panels provide superior sound insulation, ensuring quieter and more comfortable indoor environments.

05 LIGHTWEIGHT & EARTHQUAKE-RESISTANT

The lightweight yet robust design minimises structural load while offering high impact resistance. Ideal for seismic-prone areas, the panels enhance building stability and reduce earthquake-related risks.

06 ECO-FRIENDLY & LONG-LASTING

Constructed from chemically stable, non-toxic materials, the panels are recyclable and resistant to mould, UV radiation, and environmental degradation. Their durability and low-maintenance surface ensure a long lifespan, aligning with sustainable construction practices.

07 AESTHETIC VERSATILITY

Choose from over patterns and colour combinations to achieve bespoke architectural designs. The panels enable creative freedom, harmonising with diverse architectural styles for visually striking exteriors.

08 BROAD APPLICATIONS

Suitable for residential, commercial, and public projects—including offices, villas, municipal facilities, retrofits, and landscape structures—the panels are ideal for steel, lightweight, and framed constructions. They excel in energy-efficient renovations and interior/exterior design upgrades.

20 FEET FOLDING CONTAINER HOUSE



Applications:

- **Residential Use:** Ideal for temporary or permanent housing, vacation homes, or guest houses.
- **Commercial Use:** Suitable for offices, retail spaces, pop-up shops, and small businesses.
- **Event Spaces:** Can be used as temporary event venues, ticket booths, or information centers.
- **Educational Facilities:** Can serve as classrooms, training centers, or on-site learning spaces.
- **Storage Solutions:** Useful for secure storage units or equipment shelters.
- **Workspaces:** Can be configured as workshops, studios, or small-scale production areas.

Advantages:

- **Quick Assembly:** Easy and fast disassembly and assembly, reducing setup time.
- **Cost-Effective:** No need for professional construction teams, saving labor costs.
- **Eco-Friendly:** No construction waste, reusable, and made from low-carbon, green materials.
- **Portable:** Lightweight and easy to transport, saving on logistics costs.
- **Durable:** Weather-resistant, fireproof, and corrosion-resistant for long-term use.
- **Customizable:** Can be expanded or modified to suit different needs, such as adding kitchens, bathrooms, or meeting rooms.

Structural Features:

Sturdy and durable, strong seismic resistance, deformation resistance, good sealing performance, can be assembled to expand usage space, easy to disassemble, superior performance, stable and firm, good shockproof performance, waterproof, fireproof, and corrosion-resistant.



Frame Structure:

Top Main Beam
Bottom Main Beam
Front and Rear Main Beams
Side Wall Frame
Bottom Load-Bearing Capacity
Top Load-Bearing Capacity
Hanging Head
Center Floor

Details:

Q235B P-shaped square tube 60x80x1.3mm
Q235B Rectangular square tube 60x140x1.3mm
Q235B Irregular square tube 60x80x1.2mm
Q235B P-shaped square tube 40x80x1.2mm
Q235B Rectangular square tube 40x40x1.2mm
Q235B Rectangular square tube 40x40x1.2mm
Q235B 1252004mm
Galvanized hinge 13mm

Roof:

Overall Framework Coating
External Top Plate
Internal Ceiling

Details:

Electrostatic spraying/high gloss white
Corrugated board 0.4mm
Color steel veneer V831*0.25mm

Wallboard:

Insulated Glass
Sidewall
Front and Rear Wall

Details:

Fiberglass cotton roll 50mm (bulk density 16 kg)
50mm composite board 0.23mm + basalt rock wool (bulk weight 50 kg+ 0.1mm
65mm composite board 0.23mm + basalt rock wool (bulk weight 50 kg)+ 0.1mm

Floor:

Fireproof Glass Magnesium Floor 15mm

Electrical System:

Wiring Installati on
Electrical Products
Circuit Connecti on
Indoor Wiring

Details:

Must be installed strictly in accordance with moisture-proof regulations
Must comply with CE certification
According to circuit engineering specifications
Incoming line 4 * National standard soft copper wire, 1 20A circuit breaker, socketinlet 2.5 * One five-hole single opening socket, one air conditioning socket, andone long LED light

High-Quality Anti-Theft Door:

Warm white, Size: 970mm * 970mm

Plastic Steel Anti-Theft Window:

Warm white, Size: 970mm * 970mm

Fire Protection Standard:

The entire house meets the A-level fire protection standard

UNIT SPECIFICATIONS

Expanded Dimensions

Length 5.80m
Width 2.44m
Height 2.50m

Internal Dimensions

Length 5.64m
Width 2.32m
Height 2.40m

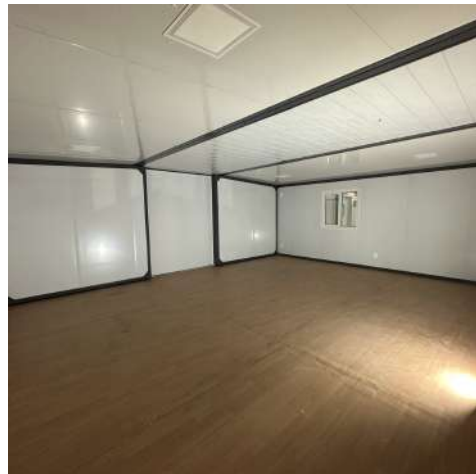
Area

TOTAL AREA: 14.15 m ²

Folded Dimensions

(L)5.80m * (W)2.48m * (H)0.41m

GALLERY



The interior design and layout of the house can be customized to meet your specific needs.

COUNCIL DOCUMENTATION (IF REQUIRE)

- Top Graphic - Suryey
- Suryeyor foundation set out
- suryeyor certificate for CCC
- Geotech report
- Geo inspection
- Geo PS4 for CCC
- Engineer plan
- Engineer inpsetion
- Enginner PS4 for CCC
- Architect plan
- CCC application

The prices listed under **ADDITIONAL CHARGES** are for reference only, due to the customization and uncertainty involved (e.g., government policies regarding BC requirements for small houses, and changes in dimensions and designs of kitchen cabinets based on your specific needs). Our final pricing will be **ACTUAL REIMBURSEMENT PLUS AN 8% SERVICE FEE**.

ADDITIONAL CHARGES

- Foundation
- 3 in 1 services connectionn
- Drainage
- Transportation within New Zealand (From ATF Stage to your Site)

OPTIONAL EXTRAS

- Kitchen cabinet
- Exterior decking
- Gas hot water cylinder
- Air conditioning
- Range hood
- Water meter sub
- Kitchen Appliance
- Solar system
- Electric heater
- Curtain

The interior design and layout of the house can be customized to meet your specific needs, with slight adjustments to the pricing based on your requirements. Additionally, our showroom will be opening soon, and we warmly invite you to visit for an on-site inspection and further discussions with us.

Once the details are confirmed, our design team will provide professional and detailed floor plans, renderings, and site preview images.

FAQ

ARE YOUR PRODUCTS CERTIFIED BY NEW ZEALAND AUTHORITIES?

Our Modular Homes are currently under application for the Multiproof Certificate from the New Zealand government, ensuring compliance with local building standards and regulations. Our Modern Cabin and Expandable Homes are designed and manufactured in strict accordance with New Zealand building codes to guarantee safety and quality.

WHAT IS THE INSTALLATION TIMEFRAME?

- **Modular Homes:** Installation typically takes 2 to 3 weeks on-site.
- **Modern Cabin & Expandable Homes:** Due to their pre-fabricated design, installation can be completed within 1 week.

WHAT IS INCLUDED IN THE LISTED PRICE?

Our pricing includes:

Product structure: Walls, framework, windows, and doors.

Installation services: Our professional team handles the full on-site installation.

Interior facilities:

- **Modern Cabin:** Fully integrated kitchen and bathroom, customizable based on your preferences.
- **Modular Homes & Expandable Homes:** Equipped with basic kitchen and bathroom facilities, with cabinet customization options available.

WHAT IS NOT INCLUDED IN THE PRICE?

Foundation costs: Varies depending on site conditions.

Transportation within New Zealand: Pricing depends on distance and delivery conditions.

Council permits and documentation fees: Includes regulatory applications.

Utility connection fees: Costs related to connecting electricity and plumbing on-site.

For all non-included items, we provide real-time cost assessments, with **an additional 8% service fee**.

DO YOU WORK WITH CERTIFIED PROFESSIONALS FOR INSTALLATION?

Yes, we collaborate with licensed New Zealand electricians and plumbers, ensuring all electrical and plumbing systems meet NZ compliance standards. Certification documents can be provided upon request.

FAQ

DO YOU OFFER A FULL-PACKAGE SERVICE?

Yes! We provide a comprehensive one-stop solution, including:

Foundation construction: Design and installation.

Deck construction: Custom-built to fit your needs.

Water & power connections: Handled by certified professionals.

Council documentation: Assistance with required permits and approvals.

Expert team support: Including engineers, surveyors, and designers.

DO YOU PROVIDE FINANCING OPTIONS?

Yes! We offer a range of financing solutions to accommodate different budgets. Contact our financial consultants to explore the best option for your needs.

CAN THE HOMES BE RELOCATED IN THE FUTURE?

Absolutely! Our products are designed with pre-installed lifting points, making relocation easy. If you need to sell or move your home, the process is simple and convenient.

CAN THE LAYOUT AND DESIGN BE CUSTOMIZED?

Yes! Our homes offer extensive customization options, including:

Interior layout: Tailored to your specific needs.

Exterior finishes: Wide range of materials and color choices.

Interior wall finishes: Designed to match different aesthetics.

Flooring options: Various materials available to suit your style.

DO YOU OFFER ADDITIONAL FACILITY OPTIONS?

Yes! To enhance functionality and adaptability, we offer optional add-ons such as:

External water heaters for continuous hot water supply.

Solar panel systems for sustainable, off-grid energy solutions.

Underground wastewater tanks for areas without municipal sewage connections.

These features are especially beneficial for homes located in farms, rural areas, or off-grid locations, ensuring independent operation without city water and power connections.

FAQ

DO I NEED A BUILDING PERMIT?

In most cases, a building permit is required for new structures in New Zealand. However, since our Modular Homes have a Multiproof Certificate, some approval processes may be streamlined. We recommend checking with your local council for specific permit requirements before starting your project.

HOW DOES TRANSPORTATION AND INSTALLATION WORK?

Once your home is pre-fabricated in our factory, it will be delivered to your location by our specialized transport team. Our installation team will then handle foundation preparation, placement, and final connections, ensuring a secure and seamless setup.

CAN I VISIT A DISPLAY HOME?

Yes! where you can experience our homes in person. Please contact our customer service team to schedule a visit.

WHAT AFTER-SALES SERVICES DO YOU OFFER?

Our dedicated after-sales team is available for ongoing support and maintenance. Whether you need minor adjustments or expert servicing, you can reach us via phone or email, and we'll arrange assistance promptly.

Let's Build the Future of Housing Together!

Whether you are a homeowner, business, or government agency, we offer expertly crafted, flexible, and sustainable modular solutions to meet your needs.

Contact us today to explore your options and discover the future of modular living!



98 Hobsonville Road, Hobsonville, Auckland 0618



0800 24 2208



sales@modernmodular.co.nz



www.modernmodular.co.nz